

Hill District Grandstand Show

GENERAL RULES

Entry Deadline: December 1, 2025

The purpose of the Hill District Grandstand Show is to support youth development and provide educational opportunities for youth related to agricultural, mechanical and natural resource industries.

The Hill District Grandstand Show is committed to the humane treatment of all animals exhibited. Every reasonable precaution is taken to promote animal safety and well-being. The production practices in the livestock industry are based on good principles of animal husbandry. No one has a greater economic stake in the welfare of animals than the livestock producers and organizations involved in the promotion of agriculture.

Force Majeure:

The Hill District Grandstand Show shall not be liable for any delay or failure to perform its operations, activities, shows and events to the extent such a delay or failure results from a force majeure occurrence. A force majeure occurrence is defined as any occurrence arising from causes beyond the reasonable control of the Hill District Grandstand Show and which delays or prevents performance by the Hill District Grandstand Show otherwise required by this Agreement, including but not limited to any (i) breakage or accident to equipment, machinery, or facilities; (ii) and strikes, lock-outs or other labor difficulties; (iii) statutes, ordinances, regulations, orders directives or rules issued by governmental authorities, including, but not limited to those concerning public health and safety, animal disease prevention, detection and response and/or protection of the environment; (iv) judicial decrees or orders; (v) acts of God; (vi) animal diseases and/or quarantine; (vii) wars, riots or insurrections; (viii) civil disobedience, public demonstrations or sabotage; (ix) fires, floods, explosions or inclement weather; x) inability to obtain necessary labor, materials, supplies, utilities or transportation; (xi) depression, recessions or other economic downturns; (xii) embargoes or energy shortages; or (xiii) other causes beyond the Hill District Grandstand's reasonable control.

Emergency Evacuations:

During such times as deemed necessary by local, state or federal authorities, the Hill District Grandstand Show, and/or its officials, may evacuate the show grounds. Incidents such as but not limited to bomb threats, acts of war, declarations of war, code red of the Homeland Security System, fire, etc. will be acted upon in accordance and cooperation with local, state and federal authorities. Priority evacuation will be given to human life, then livestock. In the unfortunate event this occurs, the Hill District Grandstand Show will do everything possible to care for personal property, animals, commercial exhibitors' merchandise, etc. until the authorities remove

the evacuation order, and you are allowed back onto the Show Grounds.

- 1. Interpretation and Violation of Rules:** Exhibitors are requested to report any rule violation to Show Management immediately so that appropriate action may be taken. The Hill District Grandstand Show reserves the final and absolute right to interpret these rules, and to settle and determine all matters, questions and differences in regard thereto or otherwise arising out of or connected with, or incident to, the Hill District Grandstand Show and to amend or add to these rules as its judgment may determine. Any exhibitor who violates any of the rules will forfeit all privileges and premiums and be subject to such penalty as the Hill District Grandstand Show may order.
- 2. Special Rules:** Special Rules are published in any department where necessary. If there is a conflict between the Special Rules and the General Rules, Show Management will make a ruling as to such conflict, which shall be binding and final.
- 3. Decisions:** The decision of the judges shall be final in all cases, except where mistake, fraud, misrepresentation, or collusion, not discovered at or before the time of award, is proven. Any objections to a judge must be submitted in writing to Show Management prior to the event in question.
- 4. Official Protests:** Official Protests must be submitted in writing and be accompanied by a \$500.00 cash deposit, which will be forfeited if the protest is not sustained. The protest must state plainly the cause of complaint or appeal, giving good and sufficient reasons therefore, and must be delivered to Show Management immediately upon the occasion for such protest. Any protest not officially filed within 24 hours of the alleged incident will not be considered. Protests concerning ages of animals must be filed with the department superintendent two (2) hours prior to the commencement of judging. Judging procedures will not be interrupted for protest investigation. These cases are referred to the executive board who will have full power to act and from whose decision there can be no appeal.
- 5. Disqualification:** Should any project, contestant or team awarded a prize be disqualified, the lower placing project, contestant or team will not move into the higher position.
- 6. COVID-19 Safety Information, Duty to Self-Monitor and Assumption of the Risk:**

All Exhibitors, their family members and other related persons participating in the livestock events or on-grounds at any Hill District Grandstand Show facilities shall comply with all health and safety orders, rules and guidelines related to COVID-19 promulgated by the state, county, local and show officials.

Safety Information: COVID-19 is extremely contagious and is spread mainly from person-to-person contact. The Hill District Grandstand Show cannot guarantee that its participants, volunteers, partners or others in attendance will not become infected with COVID-19. Please follow CDC guidance if you are not feeling well, tested positive for COVID-19, or come into close contact with a person with COVID-19. For more information on CDC guidelines go to the [CDC Website](#).

Assumption of the Risk: I acknowledge and understand the following:

- i. Participation includes possible exposure to and illness from infectious diseases including but not limited to COVID-19. While particular rules and personal discipline may reduce this risk, the risk of serious illness and death does exist;
- ii. I knowingly and freely assume all such risks related to illness and infectious diseases, such as COVID- 19, even if arising from the negligence or fault of the Released Parties; and
- iii. I hereby knowingly assume the risk of injury, harm and loss associated with the Activity, including any injury, harm and loss caused by the negligence, fault or conduct of any kind on the part of the Released Parties.

7. Liability:

- a. All exhibits will be under the control and direction of the hosting organization, but Hill District Grandstand Show shall not be responsible or liable for any loss, injury or damage which may occur. The exhibitor will be solely responsible for any consequential or other loss, injury or damage done to, or occasioned by, or arising from, any animal or property exhibited by him/her, and for its description in the Premium List. All owners and persons in charge of property or animals shall care for, guard, protect and preserve the same, as Hill District Grandstand Show does not undertake any obligation to do so and shall not be held responsible for any loss, shrinkage or damage to such property, animals or any owners or exhibitors thereof.

- b. **RELEASE AND INDEMNITY: EACH EXHIBITOR, BY ENTERING OR EXHIBITING A PROJECT AT THE HILL DISTRICT GRANDSTAND SHOW: EXHIBITOR HEREBY INDEMNIFIES, RELEASES AND HOLDS HARMLESS, AND AGREES TO DEFEND, HILL DISTRICT GRANDSTAND SHOW, COUNTY, AND EACH OF THEIR RESPECTIVE DIRECTORS, OFFICERS, MANAGERS, PARTNERS (GENERAL AND LIMITED), EMPLOYEES, OWNERS, INVITEES, AGENTS, SUCCESSORS AND ASSIGNS (COLLECTIVELY, THE “RELEASED PARTIES”) FROM AND AGAINST ANY DEMANDS, CAUSES OF ACTION, PROCEEDINGS, FINES, PENALTIES, LOSSES, LIABILITIES, DAMAGES, COSTS, EXPENSES (INCLUDING REASONABLE ATTORNEYS’ FEES) OR CLAIMS FOR INJURIES TO PERSONS, INCLUDING DEATH, OR DAMAGE TO PROPERTY (COLLECTIVELY, “LIABILITIES”) TO WHICH THE RELEASED PARTIES, OR ANY OF THEM, MAY BECOME SUBJECT, WHICH ARISE FROM OR IN CONNECTION WITH, OR IN ANY WAY RELATE TO (I) ANY BREACH BY EXHIBITOR OF ANY OF THE TERMS OF THIS AGREEMENT; (II) ANY ACT OR OMISSION BY EXHIBITOR OR ANY OF ITS AGENTS, EMPLOYEES, INDEPENDENT CONTRACTORS, INVITEES OR GUESTS, INCLUDING ANY NEGLIGENT ACT OR OMISSION OR WILLFUL MISCONDUCT; OR (III) EXHIBITOR’S PARTICIPATION IN, INVOLVEMENT WITH OR ATTENDANCE AT ANY HILL DISTRICT GRANDSTAND SHOW EVENT, OR EXHIBITOR’S ENGAGING IN A FARM ANIMAL ACTIVITY AS DEFINED IN SECTION 87.001 OF THE TEXAS CIVIL PRACTICE AND REMEDIES CODE, INCLUDING ALL SUCH LIABILITIES RESULTING FROM THE ALLEGED**

OR ACTUAL NEGLIGENCE OF HILL DISTRICT GRANDSTAND SHOW OR ANY OF THE OTHER RELEASED PARTIES. EXHIBITOR HEREBY ACKNOWLEDGES AND AGREES THAT THE FOREGOING INDEMNITY AND RELEASE PROVISIONS INCLUDE INDEMNIFICATION AND RELEASE BY EXHIBITOR FROM AND AGAINST THE RELEASED PARTIES' OWN NEGLIGENCE.

8. Eligibility:

UPDATED: The **Junior Market (barrow, lamb, goat, steer) divisions** are limited to entries from exhibitors from Atascosa, Bandera, Blanco, Burnet, Comal, Concho, Crockett, Dimmitt, Edwards, Frio, Gillespie, Kendall, Kerr, Kimble, Kinney, Lampasas, Live Oak, Llano, Mason, Maverick, McCulloch, Medina, Menard, Reagan, Real, San Saba, Schleicher, Sutton, Upton, Uvalde, Val Verde, Wilson, and Zavala counties.

The **Junior Breeding Sheep, Purebred & Cross-bred Gilt, Turkey and Agriculture Mechanics division** are limited to entries from within the state of Texas.

The term "exhibitor" shall mean the bona fide owner of the project. Junior Show exhibitors are subject to the General & Junior Rules as well as the Special Rules. Exhibitors are responsible for knowing and complying with all rules of this show.

Exhibitors must be bona fide members of a Texas County 4-H Club or Texas FFA Chapter. Exhibitors must have continuously, personally, fed and cared for their projects under the direct supervision of an AST or a CEA.

Exhibitors may enter as either a Texas 4-H or FFA member, but not as both in the same Department. Any exhibitor who enters as both in the same Department will have all his/her entries disqualified without refund of fees.

To be eligible, boys or girls must be enrolled in, and attending, public, private or home school elementary or secondary schools in Texas at time of show; be between the ages of 9 and 18 on August 31, 2024, or be between 8 and in the third grade and 18 on August 31, 2024, and be bona fide residents of the State of Texas.

Junior exhibitors and contestants suspended under Texas Education Code 33.081 "No Pass, No Play" are ineligible to participate in any Hill District Grandstand Show activity, event or competition. Any project owned by an ineligible exhibitor is ineligible for competition. This includes Agricultural Mechanics entries.

This is an invitational livestock show. The Hill District Grandstand Show reserves the right to extend or withhold an invitation to any exhibitor.

9. UPDATED: Junior Show Entry: Each exhibitor will enter the Hill District Grandstand Show online. Families with multiple exhibitors will need to complete the online entry process for each exhibitor individually. The entry fee will be \$35 per entry. Entries are not considered complete unless they have been submitted online on or before December 1, 2025. Incomplete entries will not be accepted.

- i. Late Entries: Entries submitted on or after December 2, 2025, through December 15, 2025, will be charged a late entry fee of \$100 per entry. Entries submitted on or after December 16, 2025, through January 10, 2026, will be charged a late entry fee of \$200 per entry.

- ii. Entries may be completed from January 11, 2026 until the arrival deadline for each respective division for \$350.00 per entry.
- iii. Show Management may turn away any late entry without explanation.

10. Junior Livestock Judging Contest Entry: Entries will be made online through judgingcard.com. The entry fee will be: \$15/individual. Entries are not considered complete unless they have been submitted online through judgingcard.com by January 13, 2026.

- i. Late Entries: Participants can enter on the day of contest during check-in for a late fee of \$30.
- ii. Show Management may turn away any late entry without explanation.

11. Refunds: There will be no refund of fees. In the event of cancellation of a specific contest/show, refunds may be offered in-partial or in-full and will be determined solely by the Hill District Grandstand Show.

12. Quality Counts: To be eligible to compete in the Junior Breeding and/or Junior Market Shows, exhibitors will need Quality Counts verification. The Quality Counts verification number must be recorded on the Junior Entry Form when entering the project. Please refer to the website <https://agrilife.org/qualitycounts/> for information on how to become verified.

13. Ownership/Feeding Periods: All projects entered and exhibited at the Hill District Grandstand Show must be owned and fed in accordance with all Texas 4-H and FFA state validation program guidelines for that respective species. If an animal is missing their state validation ear tag upon arrival, it is the exhibitor's responsibility to notify show officials and work with validation staff onsite to retag the animal.

14. Ineligible Animals: Any animal that has been sold during the feeding period set by the Texas 4-H and FFA state validation programs via private treaty or public auction is ineligible to show. If ownership changes or has the possibility of changing through a sale offering (including animal(s) purchased back by the exhibitor), regardless of method or length of time, that chain of animal ownership is considered broken, and the animal is ineligible. This specifically excludes animals sold at the local or county level at a Premium Auction, where the animal in question never had the possibility of changing ownership.

15. UPDATED Exhibitor Substitution: All entries must be shown and sold by their owner. Exhibitor substitutions for the show and sale may be allowed under the conditions outlined below. In all cases, the Department Superintendent must approve the exhibitor substitution and will do so only if all conditions are met. Failure to comply with substitution guidelines may result of loss of entry privileges into the Hill District Grandstand and/or forfeiture of youth auction or premium checks for the exhibitor and/or the substitute exhibitor.

Substitute exhibitors may show only one project (except in departments which exhibitor may enter more than one project), in addition to their own project, in each Junior Department. Substitute exhibitors must be entered and exhibiting their own project in the respective department in which they are serving as a substitute. An exhibitor of a past grand champion in a respective junior market animal department is not eligible to serve as a substitute exhibitor within that department.

- a. **Substitution A - Other School or 4-H Activity:** This request must be made by email prior to January 9, 2026 by 11:59 p.m. to thegrandstand21@gmail.com. This request must be accompanied by a statement, signed by a School Administrator, on school letterhead, stating the specific reason a substitute is requested*. Attending school or practice does not constitute as an Other School Activity. Examples of Other School Activities are UIL events, FFA, school sports, or similar events. Participation at The National Western in Denver and the Southwestern Livestock Exposition in Fort Worth will be considered approved other school or 4-H activities. *If a 4-H member has a 4-H conflict, the county extension agent can submit a letter requesting approval for a substitute.
- b. **Substitution B - Sickness:** This request must be accompanied by a statement, signed by a Physician, on his/her letterhead. The Physician's statement must be submitted to the Department Superintendent prior to the start of the respective Show.
- c. **Substitution C - More Than One Entry In A Class or the Exhibitor Has Entries In More Than One Department Showing At The Same Time:** This request must be made on the Official Hill District Grandstand Show Exhibitor Substitution Form provided by Show Management. The completed Official Hill District Grandstand Show Exhibitor Substitution Form must be submitted to show officials prior to the start of the respective Show.

In any of the three situations listed above, or in the case of an emergency, the Department Superintendent may use his/her own discretion as to whether a substitute showman will be allowed. If a positive decision is rendered, the substitute must be from the same school, FFA Chapter, or 4-H Club as the original exhibitor with the following two exceptions:

- i. The original exhibitor is the only exhibitor from that school, FFA Chapter, or 4-H Club entered in that Department.
- ii. All other members from that school, FFA Chapter, or 4-H Club are exhibiting at the same time.

In either case, any junior exhibitor who is entered and exhibiting in the respective department meeting the approval of the Department Superintendent may exhibit the animal.

- 16. Premiums:** Premium monies will be distributed by the Hill District Grandstand Show. Auction checks will be issued by the Hill District Grandstand Show and may be mailed separate from premium checks or commission (floor) checks to the 4-H or FFA address. If premium and/or auction checks are reissued for any reason a \$35 fee per check will be subtracted from the premium/auction total.

- 17. Sifting/Classifying Committees:** The Hill District Grandstand Show may appoint Sifters and Classifiers to inspect projects. Projects may be reassigned or disqualified based on the

decisions of Sifters and Classifiers. Decisions of the Sifters and/or Classifiers will be final and protests will not be considered. Interference with Sifters and/or Classifiers will not be tolerated. Exhibitors and others are requested not to question their decisions, and to do so may disqualify the exhibitor concerned.

- 18. Judging:** Exhibitors are responsible for knowing the times at which their projects will be judged. Any project not presented promptly will be ruled ineligible and barred from competition. No complaint or protest on the grounds that the judge overlooked projects will be considered.
- 19. Interference:** Any exhibitor who, in any way, whether in person or by agent, or servant, interferes with the judges during their adjudication, or shows any disrespect to them or the show, is subject to be penalized. Show Management may demand a proper apology from the exhibitor, may exclude him/her from competition, bar him/her from the Grounds, and may also withhold any prizes that may have been awarded.
- 20. Restraint / Unruly Animals:** Exhibitor and patron safety are a top priority. Therefore, Show Management or Livestock Committee Leadership/Ring Stewards may remove any unruly animal from the show and/or the Grounds at any time; there will be no appeal. Cattle must be shown with a halter and be sufficiently gentle to be properly handled by one attendant. If exhibition of a project poses a danger to the exhibitor and/or other parties, Show Management reserves the right to allow a substitute exhibitor or remove the project from competition. In some cases, projects may be instructed to be removed from the Grounds.
- 21. Show Equipment:** Livestock shows provide an opportunity for the general public to be exposed to agricultural exhibits. Exhibitors should be mindful of the show equipment being used and the manner in which it is being used. Show Management or Livestock Committee Leadership/Ring Stewards reserve the right to decide what constitutes acceptable show equipment and how the equipment is being used by the exhibitor.
- 22. Project Care:** Exhibitors must remain in charge of their project(s) and care for them for the duration of the show at all times. If needed, the exhibitor may have a competent caretaker (must be an immediate family member of the exhibitor, other 4-H/FFA member, or AST/CEA) care for the project(s). However, the exhibitor is the absolute insurer of and is responsible for the condition of their animal/project(s). Show Management reserves the right to decide what constitutes acceptable treatment of animal projects. Unacceptable treatment of animal projects will not be tolerated and could result in immediate disqualification of the exhibitor along with his or her club/chapter.
- 23. Animals Outside of Barns:** All animals must remain inside the barn or warm up arena area. Any animal found outside of these areas will be subject to disqualification.
- 24. UPDATED: Unethically Fitted Livestock:** The showing of unethically fitted livestock or livestock of an ineligible age for exhibition in the class entered, and the misrepresentation of breeding or milking status, are prohibited.
 - a. Description:** Unethical fitting means any attempt to alter the natural appearance, conformation, musculature or weight of an animal by any unnatural means, as well as changing the normal conformation of any part of the animal's body or using drugs, medications, chemicals, or other substances (including over-the-counter and extra-label substances and uses), or mechanical

devices to alter the physical makeup or performance of the animal. Unethical fitting includes but is not limited to the following:

- i. Animals that are in milk due to an unnaturally induced lactation.
- ii. Balancing the udder by any means other than leaving naturally produced milk in any or all quarters.
- iii. Treating or massaging any part of the animal's body, internally or externally, with an irritant, counterirritant, or other substance to temporarily improve conformation.
- iv. Blocking the nerves to prevent limping or switching of the tail.
- v. Bruising or blemishes negatively impacting food safety or marketability of an animal's carcass.
- vi. Surgery or other practices performed to change the natural contour or appearance of the animal's body, hide, hair, or feet (this is to include any materials added to the feet of an animal) except the removal of warts or horns and the permitted clipping and dressing of hair and trimming of hooves.
- vii. Insertion of foreign material under the skin or in the rectum.
- viii. Changing the color of hair, a spot or an area on the animal's body. Any grooming material that allows color to come off from any animal will not be allowed at the show.
- ix. The use of diuretics.

Administration of an illegal, unapproved, or performance enhancing drug internally or externally.

- b. Verification:** At the time of entry the exhibitor is specifically representing that no animal entered by him/her is unethically fitted, and that the breeding, age, and milking status are correctly stated.
- c. Use of Drugs:** The use by non-veterinarians* of animal drugs or other substances in a manner other than in accordance with the labeling approved by FDA is a violation of federal law. Exhibitor and exhibitor's parents and/or guardians agree that: (1) they are absolutely and completely responsible persons for the care and custody of their animals, (2) The Hill District Grandstand Show shall be entitled to disqualify an exhibitor whose animal tests positive for any drug, even if the exhibitor and the exhibitor's parents or guardians are innocent of any wrongdoing and did not administer the drug, (3) the drug test results of the testing laboratories are final and binding upon the exhibitor and the exhibitor's parents and/or guardians. Even if the source of the drug is unknown, the Hill District Grandstand Show shall be entitled to disqualify the exhibitor and withhold any premiums or awards.

*Abuse of the extra-label privilege by veterinarians is unethical and is subject to serious consequences such as license revocation.

The term "drug" shall mean any substance the sale, possession, or use of which is regulated by federal, state, or local law or regulation, as well as any substance used by the medical or veterinary professions that affects the circulatory, respiratory, muscular, skeletal, or central nervous system of any species of livestock.

- d. Unapproved Drug Use:** The showing of any animal that has been administered during its life any quantity of any unapproved drug, chemical or medication is strictly prohibited. Such drugs include, but are not limited to, any diuretic, unapproved growth stimulant or other unapproved medication. Unapproved means not approved by the Food and Drug

Administration (FDA) and/or the U.S. Department of Agriculture (USDA) for slaughter animals including animals that may be destined for human consumption. Animals must remain free and clear of all unapproved drug and chemical residues while on show grounds.

- e. **Approved Drug Use:** If an animal has been administered a drug that is FDA approved for its species, sufficient time must have passed so that the animal does not test positive for that drug upon arrival to the Hill District Grandstand Show in quantities exceeding the allowable tolerances as prescribed by the FDA or slaughter animals including animals that may be destined for human consumption.
- f. **Animal Inspection:** As condition for participation at the Hill District Grandstand Show, each exhibitor agrees to submit any animal entered by the exhibitor for inspection. Each exhibitor agrees to have such animal submitted to any tests requested by the Hill District Grandstand Show. Each exhibitor also agrees that the opinion reached by the Department Superintendent or designated inspector as to whether an animal is unethically fitted shall be final and binding without recourse against the Hill District Grandstand Show or any of its officials, directors, officers, employees, volunteers and staff. Further, the Hill District Grandstand Show specifically reserves the right to have tissue, blood, urine, wool, hair and/or fecal laboratory analysis made on any animal entered for competition. The conclusions reached by the laboratory shall be final and binding without recourse against the Hill District Grandstand Show or any of its officials, directors, officers, employees, volunteers, and staff. An exhibitor of an animal that is found to be unethically fitted, and/or tested positive for any unapproved drug, chemical or medication, and/or for any FDA approved drug or medication in excess of allowable tolerances as prescribed by the FDA for slaughter animals including animals that may be destined for human consumption is subject to disqualification, forfeiture of premiums and awards, and suspension from future participation in any Hill District Grandstand Show sanctioned competition.
- g. **Emergency Treatment:** If an animal requires emergency treatment while on show grounds, a licensed veterinarian will be allowed to administer any drug, chemical or feed additive. An exhibitor may choose any licensed veterinarian, but a committee member must be notified in advance, and he/she must be present during treatment. Animals which are administered treatments with a withdrawal or extended elimination time period will be disqualified from competition.
- h. **Non-adherence to Rules:** Any exhibitor or his/her representative, including but not limited to parents, guardians, or fitters, found guilty of misrepresentation, or not abiding by the Hill District Grandstand Show rules, will be disqualified and denied the privilege of showing in the Hill District Grandstand Show.

25. Wholesome Meat Act: The USDA Wholesome Meat Act applies to all market livestock. Only animals eligible for immediate slaughter may be exhibited at the Hill District Grandstand Show:

- i. Animals must be in good health and carcasses free of drug or chemical residues.
- ii. Drug label directions for use and withdrawal periods must be followed.
- iii. If drug or chemical residues are found in tissue of carcasses, the entire carcass may be condemned.

26. Exhibitor Behavior: The Hill District Grandstand Show does not condone and will not

permit aggressive behavior towards animals or any other persons. Any exhibitor or anyone assisting an exhibitor is not allowed to aggressively pop, slap, hit, or strike any animal at any time during the show or at any place on the Show Grounds. Any aggressive or unwarranted behavior by an exhibitor or anyone assisting an exhibitor towards another individual will not be tolerated. If such behavior is witnessed, it may result in immediate disqualification of the exhibitor, and/or forfeiture of all fees, premiums, and awards. In certain cases, the exhibitor or associated persons may be banned from the Grounds and/or any future competition. Protests are not permitted.

- 27. Diseased Animals:** No animals found to have a disease of any character will be admitted to the Grounds at any time, and Superintendents are instructed and authorized to refuse unloading privileges to any stock found to have an undesirable ailment. This includes market barrows that stress and are unable to walk off the trailer and to their assigned pen on their own.
- 28. Pets:** No pets are allowed on Grounds. Exceptions are granted for service dogs that are individually trained to do work or perform tasks for a person with a disability.
- 29. Health:** All exhibitors will comply with current regulations governing livestock by the Texas Animal Health Commission. It is the exhibitor's responsibility to make sure they are in compliance with TAHC's regulations as to transportation and movement of livestock.
- 30. Recreational Vehicles:** No recreational vehicles (unless used by Show Officials) will be allowed to be used on the Grounds.
- 31. Terminal Projects:** All projects that are sold through the Hill District Grandstand Show Youth Auction are terminal. All projects that are presented for sale in the youth auction will become property of the Hill District Grandstand Show. Non-placing projects in market divisions may be sold at the market price or they may be released.

WARNING
UNDER TEXAS LAW (CHAPTER 87, CIVIL PRACTICE AND REMEDIES CODE), A
LIVESTOCK SHOW SPONSOR IS NOT LIABLE FOR AN INJURY TO OR THE
DEATH OF A PARTICIPANT IN A LIVESTOCK SHOW RESULTING FROM THE
INHERENT RISKS OF LIVESTOCK SHOW ACTIVITIES.

YOUTH AUCTION RULES

1. ***UPDATED* Eligibility for Sale:** Only placing animals in the Market Barrow, Lamb, Goat, Turkey and Steer Divisions will be eligible for sale in the Hill District Grandstand Show Youth Auction.

Placing Animals Eligible for Sale:

Market Steer Division: 1st place in each class (Total eligible: 13 hd)

Market Goat Division: 1st – 4th place in each class (Total eligible: 48 hd)

Market Barrow Division: TBA based upon arrival (Total eligible: 54 hd)

*See Market Barrow Rule #15

Market Lamb Division: 1st – 3rd place Finewool, Finewool Cross, Southdown and Dorpers, Medium Wool Classes

Turkey Division: Grand and Reserve Champion Turkey

Exhibitors will only be allowed to sell one sale qualifying project in the youth auction. If an exhibitor has multiple sale qualifying projects the exhibitor must designate the project, they will be selling at the youth auction. (Reference Youth Auction Rules 2 & 3)

2. All Grand Champions and Reserve Grand Champions from each species will be required to sell in the Grandstand Auction.

Exceptions:

- a. If an exhibitor has grand and reserve of one specie, then the exhibitor will sell the grand animal and the reserve will be pulled and allowed to be taken home.
 - b. If an exhibitor has the grand animal in more than one specie, then the exhibitor can select which specie they will sell and the other animal(s) will be pulled and allowed to take home.
 - c. If an exhibitor has the reserve grand animal in more than one specie, then the exhibitor can select which specie they will sell and the other animal(s) will be pulled and allowed to take home.
 - d. If an exhibitor has the grand animal in one specie and a reserve in another specie, then the exhibitor will sell the grand animal and the reserve grand will be pulled and allowed to take home.
3. **Animal Care:** It is the exhibitors' responsibility to take proper care of their sale qualifying project until the animals are taken into custody by Hill District Grandstand Show management.
 4. **Declaration of Sale:** Exhibitors must submit proper paperwork to show officials declaring their project for sale within 30 minutes of the completion of their respective division's show.

If a youth exhibitor has an entry in another Hill District Grandstand Show Division that has yet to take place and would like to reserve the right to sell another Hill District Grandstand Show entry if it becomes eligible for the youth auction, the exhibitor will:

- a. Submit proper paperwork to show officials declaring up to 1 project per a species

that are eligible for sale within 30 minutes of the completion of their respective division.

- b. Complete a multiple division declaration form and waiver and submit to Show Officials.
 - c. Place declared project in designated area specified by Show Officials. The project will remain in the care of the exhibitor until final declaration is made. If needed, the exhibitor may have a competent caretaker (must be a family member of the exhibitor, AST/CEA other 4-H/FFA member, or Local County/Chapter Adult Volunteer) care for the project(s). However, the exhibitor is the absolute insurer of and is responsible for the condition of their animal/project(s).
 - d. Final declaration for sale must be made within 30 minutes of completion of the last division in which that exhibitor has an entry in.
- 5. Sale Order:** Sale order will be determined by placing and at the discretion of the Hill District Grandstand Show board.
- 6. Terminal Sale:** All projects sold through the youth auction will become property of the Hill District Grandstand show and are not eligible for resale. Buyers nor exhibitors will receive/retain ownership of projects declared for sale in the Hill District Grandstand Show Youth Auction.
- 7. Youth Auction Exhibitor Expectations:**
- a. **Presentation:** Youth are expected to dress appropriate and behave in a responsible manner during the sale. Youth who fail to meet this expectation may forfeit their youth auction premium check.
 - b. **Decorations/Signs:** Exhibitors may be required to walk a designated project across the stage in place of their own or the exhibitor may be required to walk across the stage without a project. Signs or decorations other than the provided lot number are not permitted on the auction stage.
 - c. **Attendance:** Exhibitors who are unable to attend the youth auction may request a substitution for conflicts outlined under the exhibitor substitution guidelines. This request must be made by email thegrandstand21@gmail.com prior to 6 p.m. on January 16, 2025. If a substitution is granted, it is the exhibitor's responsibility to arrange a substitute exhibitor.
 - d. **Thank You Notes:** Exhibitors will be required to complete a thank-you note to respective buyer(s) and Hill District Grandstand Show supporters to receive their premium check. Thank you notes should be completed within 30 days upon receiving buyers list from CEA/AST or Show Officials.
- 8. Commission:** The Hill District Grandstand Show reserves the right to take up to a 3% commission for the sale of all projects through the youth auction.

Hill District Grandstand Show Schedule

January 12 – 21, 2026

Monday, January 12, 2026

6:00 a.m.- 10:00 a.m. Market Goat Arrival-John L. Kuykendall Arena & Event Center
9:00 a.m. – 2:00 p.m. Arrival Market Steers & Breeding Heifers - Kendall County Youth Agriculture & Equestrian Center
10:30 a.m. Check-In Deadline - Market Goats
12:00 p.m. Market Goat Show -John L. Kuykendall Arena & Event Center
3:00 p.m. Check-In Deadline - Breeding Heifers & Market Steers
3:00 p.m. Weight Card Due for European Steer Exhibitors
3:30 p.m. Classification of Market Steers (American & British market steer exhibitors will bring their physical weight card to classification)

Tuesday, January 13, 2026

6:00 a.m. – 10:00 a.m. Breeding Sheep Arrival- Gillespie County Fair Grounds
8:00 a.m. Breeding Heifer Show - Kendall County Youth Agriculture & Equestrian Center
Following Breeding Heifer Show Market Steer Show - Kendall County Youth Agriculture & Equestrian Center
9:00 a.m. – 2:00 p.m. Market Barrow Arrival - Hill Country Youth Event Center
3:00 p.m. Check-In Deadline - Market Barrows
10:30 a.m. – Check-In Deadline- Breeding Sheep
1:00 p.m.- Breeding Sheep Show- Gillespie County Fair Grounds

Wednesday, January 14, 2026

8:00 a.m. Market Barrow Show -Hill Country Youth Event Center
9:00 a.m. – 3:00 p.m. Arrival Market Lambs -John L. Kuykendall Arena & Event Center
4:00 p.m. Check-in Deadline - Market Lambs

Thursday, January 15, 2026

8:00am- 9:00am Arrival/sift State Turkey Show- Gillespie County Fairgrounds
9:00 a.m. Market Lamb Show -John L. Kuykendall Arena & Event Center (Classification of SD, FW, FWX, & Dorper will be done during the show)
9:00 a.m. – 2:00 p.m. Arrival Purebred & Crossbred Breeding Gilts - Hill Country Youth Event Center
3:00 p.m. Check-In Deadline - Purebred and Crossbred Breeding Gilts
10:00 a.m. State Turkey Show- Gillespie County Fairgrounds

Friday, January 16, 2026

8:00 a.m. Purebred and Crossbred Breeding Gilt Show – Hill Country Youth Event Center
9:00 – 10:00 a.m. Livestock Judging Contest Check-In – Gillespie County Fairgrounds
10:00 a.m. Livestock Judging Contest

Saturday, January 17, 2026

11:00 a.m. Buyer Check in Begins– Gillespie County Fairgrounds

11:30 p.m. Buyer Lunch

1:00 p.m. THE HDGS YOUTH AUCTION

Tuesday, January 20, 2026

12:00 p.m. – 6:00 p.m. Arrival Agricultural Mechanics - Hill Country Youth Center

6:00 p.m. Fastest Torch in the Hill Country Contest Registration Deadline

Wednesday, January 21, 2026

8:00 a.m. Agricultural Mechanics Show - Hill Country Youth Center

JUNIOR MARKET GOAT SHOW

ENTRY DEADLINE: DECEMBER 1, 2025

Superintendent: Roy Sanders

Judge: Shannon Scotten

Location: John L. Kuykendall Arena & Event Center - Llano, TX

SHOW SCHEDULE

| | | |
|---------------------|---------------------------|---|
| Arrival: | Monday - January 12, 2026 | 6 – 10 AM |
| Exhibitor check-in: | Monday - January 12, 2026 | 6 – 10:30 AM <i>(Exhibitors who have a conflict with another Hill District Grandstand show need to contact show officials prior to January 9, 2026 by 11:59 p.m. to thegrandstand21@gmail.com)</i> |
| Arrival deadline: | Monday - January 12, 2026 | 10 AM |
| Show: | Monday - January 12, 2026 | 12 PM |
| Release: | After Judging | |

This show is subject to the Hill District Grandstand General Rules, the Junior Livestock Show Rules and Special Rules listed in this section.

SPECIAL RULES

- Entry:** An entry fee made payable to Hill District Grandstand Show is required. Entries must be submitted online through the official entry system.
- Number Shown:** Each exhibitor may enter and show up to two (2) head of wether goats (no does allowed) in the Market Goat Show.
- Validation:** To be eligible to exhibit in the Junior Market Goat Show, all goats must be validated in the Texas 4-H and FFA Goat Validation Program. Each entry must have been recorded on a 4-H or FFA Goat Validation Form Master List completed by the County Level State Goat Validation Committee. Failure to comply with the rules and regulations of the Texas Goat Validation Program in any manner will result in immediate disqualification.
- Show Check-In Procedures:** Exhibitors must Check-In and complete the State Validation Tag Number, Weight on the animal information form. Upon completion, the exhibitor will be given a QR code to check-in online prior to 10:30 AM the day of check-in. Exhibitors will return their weight card to show officials. Once an exhibitor submits their animal information form to show officials, no changes to their entry will be allowed.
- UPDATED: Show Weights:** Exhibitors will turn in the official show weight for their goat. Official turn-in weigh limits are: minimum 60 lbs. and maximum 120 lbs. inclusive. All goats with

weights turned in below the minimum (60 lbs.) or above the maximum (120 lbs.) will be sifted.

6. **UPDATED: Re-Weigh:** Show Management reserves the right to weigh any goat after the completion of Check-In. All goats weighing less than 60 lbs., more than 124 lbs. or 4 lbs. heavier or lighter than the official turn-in weight will be disqualified.
7. **Ear Tags:** All ear tags except the TX Validation tag, scrapie tags and Texas Goat Breeders Association (TGBA) tag must be removed before showing. The TX Validation tag number will be used for animal identification. No tag alterations. Any change in size, shape, form, or color will void the tag.
8. **Abnormalities:** Goats showing any pronounced defect or abnormality will be barred from showing at the discretion of Show Management.
9. **Health:** Any goats found to have external parasites, open wounds, sores, skin rashes, and/or any questionable skin diseases will be disqualified at the time of classification. Goats must be removed from the facility immediately.
10. **UPDATED: Fitting:** Foreign material including (but not limited to) painting, powdering, oiling, artificial coloring, or adhesives is prohibited. Any foreign substance coming out of rectum will result in disqualification. No clippers, which require an electrical current, are allowed to be used on Market Goats once they arrive on the grounds. Touch-up clipping with cordless clippers, scissors, or hand shears will be allowed. The exhibitor is expected to feed, care for, fit, and exhibit their animal/project while at the Hill District Grandstand Show. If needed, the exhibitor may have the assistance of the exhibitor's family, AST, CEA, Local County/Chapter Adult Volunteer or other 4-H or FFA members. Any project fed or cared for by a custom fitter is not eligible. A custom fitter is considered anyone who is not a family member, AST, CEA, Local County/Chapter Adult Volunteer or another 4-H or FFA member. Violators of this rule may be barred from future participation. *Please see unethical fitting rules in general rules.*
11. **Horns:** Horns must be tipped with the remaining surface area of the horn diameter greater than a dime.
12. **Hair:** Goats must be shorn slick, with no indication of blocking, to the skin above the knee and hock joints to include the head, excluding the tail switch, before arrival on the grounds. Goats that are not uniformly slick sheared or with hair longer than 3/8" will be sifted.
13. **Blocking/Trim Tables:** Exhibitors will be able to use blocking/trim tables/racks in the designated area.
14. ***UPDATE* Blowers:** Exhibitors will be allowed to use electric and battery powered blowers in the make ready arena.
15. **Equipment:** Blocking of aisles with any kind of equipment (showboxes, feed pans, etc.) is strictly prohibited. All equipment must be stored safely above pens or in designated areas. Extension cords and fans are allowed. Heat lamps and other electrical equipment are strictly prohibited. *Extenuating circumstances may dictate special approval by show superintendent*
16. **Scales:** Scales will be provided in areas throughout the barn; such scales are unofficial and are provided for exhibitors' convenience only. Official scales will be used by Superintendents to determine official weights. No other scales will be allowed.

17. **Animals Outside of Barns:** Animals must remain inside the barn or warm up arena. Any animal found outside of these areas will be subject to disqualification.
18. **Classes:** Superintendents will break classes following the completion of Check-In. A total of twelve (12) market goat classes and four (4) weight divisions will be set at the discretion of the superintendents based upon number of entries. There will be no pre-set weight breaks. Exhibitors missing their class are ineligible to compete in a different weight division and will be sifted.
19. **Placing Goats:** All placing goats (1-4th) are eligible to sell in the Hill District Grandstand Youth Auction unless the exhibitor has qualified for the sale with another species within the Hill District Grandstand Show. *See Youth Auction Rule #2

JUNIOR MARKET LAMB SHOW

ENTRY DEADLINE: DECEMBER 1, 2025

Superintendent: Jamie Osbourn

Judge: Marty Gibbs

Location: John L. Kuykendall Arena & Event Center - Llano, TX

SHOW SCHEDULE

| | | |
|---------------------|------------------------------|--|
| Arrival: | Wednesday - January 14, 2026 | 9 AM – 3 PM |
| Exhibitor check-in: | Wednesday - January 14, 2026 | 9 AM – 4 PM <i>(Exhibitors who have a conflict with another Hill District Grandstand show need to contact show officials prior to January 9, 2026 by 11:59 p.m. to thegrandstand21@gmail.com)</i> |
| Arrival deadline: | Wednesday - January 14, 2026 | 3 PM |
| Show: | Thursday - January 15, 2026 | 9 AM <i>(Southdown, Finewool, Finewool Cross, Dorper, Medium Wool)</i> |
| Release: | After Judging | |

This show is subject to the Hill District Grandstand General Rules, the Junior Livestock Show Rules and Special Rules listed in this section.

SPECIAL RULES

- 1. Entry:** An entry fee made payable to Hill District Grandstand Show is required. Entries must be submitted online through the official entry system.
- 2. Number Shown:** Each exhibitor may show up to two (2) head in the Market Lamb Show.
- 3. Validation:** To be eligible to exhibit in the Junior Market Lamb Show, all lambs must be validated in the Texas 4-H and FFA Lamb Validation Program. Each entry must have been recorded on a 4-H or FFA Lamb Validation Form Master List completed by the County Level State Lamb Validation Committee. Failure to comply with the rules and regulations of the Texas Lamb Validation Program in any manner will result in immediate disqualification.
- 4. Show Check-in Procedures:** Exhibitors must Check-In and complete the State Validation Tag Number, Weight, and Breed Designation on the animal information form. Upon completion, the exhibitor will be given a QR code to check-in online prior to 5 PM the day of check-in. Exhibitors will return their animal information form to show officials. Once an exhibitor submits their animal information form to show officials, no changes to their entry will be allowed.
- 5. Show Weights:** Exhibitors will turn in the official show weight for their lamb. Official turn-in weight limits are: minimum 100 lbs. inclusive for Finewool, Finewool Cross, and Medium

Wool breed; minimum 90 lbs. for Southdowns and Dorpers. All lambs with weights turned in below the minimum weight requirements will be sifted.

6. **Re-Weigh:** Show Management reserves the right to weigh any lamb after the completion of Check-In. Upon re-weigh, lambs weighing less or more than 5 lbs. heavier or lighter than the official turn-in weight will be disqualified.
7. **Classification:** The show breed must be declared upon Check-In. Breed changes by the exhibitor will not be allowed at any time. Lambs will be subject to reclassification by a three-member committee. The decision of the three-member classifying committee will be final. Only the youth exhibitor or a youth substitute will be permitted in the arena during classification. Lambs must be washed free of dirt and mud before classification.

All lambs classified out of the Finewool division will be placed in either the Finewool Cross or Medium Wool division at the discretion of the classification committee. All lambs then classified out of the Finewool Cross division will be placed in the Medium Wool classes according to weight.

All other lambs classified out of the respective breed will be placed in the Medium Wool division and in the appropriate class according to weight.

8. **Abnormalities:** Sheep showing any pronounced defect or abnormality will be barred from showing at the discretion of Show Management.
9. **Health:** Any lambs found to have external parasites, open wounds, sores, skin rashes, and/or any questionable skin diseases will be disqualified at the time of classification. Lambs must be removed from the facility immediately.
10. **Ear Tags:** All ear tags except the TX Validation Tag, Texas Lamb Breeders Association (TLBA) tag, and USDA Scrapie Eradication Program identification must be removed before showing. The TX Validation tag number will be used for animal identification. No tag alterations. Any change in size, shape, form, or color will void the tag.
11. **Exhibitor Substitutions:** An exhibitor cannot leave the show ring once the class has started, until judge dismisses the class. No substitutions will be allowed into the show ring during placings. Exhibitors will be released upon conclusion of placing, or up to the judges discretion.
12. **Fitting:** Foreign material including (but not limited to) painting, powdering, oiling, artificial coloring, or adhesives is prohibited. No clippers, which require an electrical current, are allowed to be used on Market Lambs once they arrive on grounds. Touch-up clipping with cordless clippers, scissors, or hand shears will be allowed. The exhibitor is expected to feed, care for, fit, and exhibit their animal/project while at the Hill District Grandstand Show. If needed, the exhibitor may have the assistance of the exhibitor's family, AST, CEA, Local County/Chapter Adult Volunteer or other 4-H or FFA members. Any project fed or cared for by a custom fitter is not eligible. A custom fitter is considered anyone who is not a family member, AST, CEA, Local County/Chapter Adult Volunteer or another 4-H or FFA member. Violators of this rule may be barred from future participation.
13. **Blocking/Trim Tables:** Exhibitors will be able to use blocking/trim tables/racks in the designated area.

- 14. Blowers:** Exhibitors will be allowed to be use electric and battery powered blowers in the make ready arena.
- 15. Shearing:** Lambs must be shorn slick to the skin above knee and hock joints before arrival on the grounds. This will be strictly enforced.
- 16. Equipment:** Blocking of aisles with any kind of equipment (showboxes, feed pans, etc.) is strictly prohibited. All equipment must be stored safely above pens or in designated areas. Extension cords and fans are allowed. Heat lamps and other electrical equipment are strictly prohibited. *Extenuating circumstances may dictate special approval by show superintendent*
- 17. Scales:** Scales will be provided in areas throughout the barn; such scales are unofficial and are provided for exhibitors' convenience only. Official scales will be used by Superintendents to determine official weights. No other scales will be allowed.
- 18. Animals Outside of Barns:** Lambs must remain inside the barn or warm up arena. Any animal found outside of these areas will be subject to disqualification.
- 19. Classes:** Superintendents will break classes following the completion of Check-In. A total of seventeen (17) market lamb classes will be set at the discretion of the superintendents based upon number of entries. There will be no pre-set weight breaks. Exhibitors missing their class are ineligible to compete in a different weight division and will be sifted.
- 20. Placing Lambs:** All placing lambs (1-3rd – Finewool, Finewool Cross, Southdown & Medium Wool, & Dorpers) are eligible to sell in the Hill District Grandstand Youth Auction unless the exhibitor has qualified for the sale with another species within the Hill District Grandstand Show. *See Youth Auction Rule #2

JUNIOR BREEDING SHEEP SHOW
ENTRY DEADLINE: DECEMBER 1, 2025

Superintendent:

Judge:

Location: Gillespie County Fairgrounds, Fredericksburg, TX

SHOW SCHEDULE

| | | |
|--|----------------------------|-----------|
| Arrival: | Tuesday - January 13, 2026 | 6 - 10 AM |
| Exhibitor check-in: | Tuesday - January 13, 2026 | 10:30 AM |
| <i>(Exhibitors who have a conflict with another Hill District Grandstand show need to contact show officials prior January 9, 2026 by 11:59 p.m. to thegrandstand21@gmail.com)</i> | | |
| Arrival deadline: | Tuesday - January 13, 2026 | 10 AM |
| Show: | Tuesday - January 13, 2026 | 1 PM |
| Release: | After Judging | |

This show is subject to the Hill District Grandstand General Rules, the Junior Livestock Show Rules and Special Rules listed in this section.

SPECIAL RULES

- 1. Entry:** An entry fee made payable to Hill District Grandstand Show is required.
- 2. Ownership/Validation:** Sheep must be registered in the Herdbook of their Association in the name of the Junior owner(s) on or before Oct. 1, the year preceding the show. Registration certificates that list any additional names besides the name on the validation certificate will be disqualified. Purchase, delivery, possession and registration must all take place on or before Oct. 1, the year preceding the show. Original Registration Certificates must be always available. To be eligible to exhibit in the Junior Breeding Sheep Show, ewes must be validated in the Texas 4-H and FFA Breeding Sheep Validation Program on or before October 31, 2022. Failure to comply with the rules and regulations of the Texas Breeding Sheep Validation Program in any manner will result in immediate disqualification.
- 3. Show Check-In Procedures:** Exhibitors must check-in and present original registration papers (scramble papers will be accepted) to the department superintendent between 1 p.m. – 5:00 p.m. on January 10, 2025.
- 4. Number Shown:** Each owner may show up to two (2) animals in each single class.
- 5. Sheep Age:** Sheep will be shown according to tooth development. There will be no appeal from this determination. Sheep Age will be determined on the day of the show as each class

prepares to enter the ring. Sheep not showing the correct tooth development for that class will be moved to the next age group. Any tooth abnormalities or discrepancies, other than normal tooth development, must be taken up with show officials prior to the show.

- a. **Lamb Class** – All lambs in order to be eligible to compete in their respective classes must be carrying all milk teeth at the time of check-in. Lambs showing either or both of their first pair of permanent incisors will not be eligible to show in any of the lamb classes. Lambs under six months of age will not be eligible.
- b. **2-Tooth Class** – Sheep eligible to compete in the 2-tooth breeding class must show only the first pair of permanent incisors. Sheep, which have dropped their central pair of milk teeth and show one or both teeth of the first permanent pair are eligible in the 2-tooth class of their respective breed. Lambs may be shown in the 2-tooth class if the exhibitor has at least two entries in the lamb class.
- c. **Aged Class** – Aged Class-Sheep must show more than the first pair of permanent incisors.

6. Shearing Guidelines for show:

Dorper, Hampshire, Suffolk, Southdown, White Dorper: Must be shorn slick to the skin above the knee and hock joints. Shearing should occur prior to entering the grounds.

- 7. **Abnormalities:** Sheep showing any pronounced defect or abnormality will be barred from showing at the discretion of Show Management.
- 8. **Blocking/Trim Tables:** Trimming tables will be allowed in the barn and must be placed in locations designated by the Superintendents.
- 9. **General Equipment:** Blocking of aisles with any kind of equipment (showboxes, feed pans, feed, etc.) is strictly prohibited.
- 10. **Heelers/Assistants:** The use of heelers (assistants in the show ring) is prohibited.

11. Show Order:

| | Ram Lamb | 2-Tooth Ram | Aged Ram | Ewe Lamb | 2- Tooth Ewe | Aged Ewe |
|-----------------|-------------|----------------|-------------|-------------|--------------------|-------------|
| Delaine | 1 | 2 | 3 | 4 | 5 | 6 |
| Dorper | 7 | 8 | 9 | 10 | 11 | 12 |
| White Dorper | 13 | 14 | 15 | 16 | 17 | 18 |
| Hampshire | 19 | 20 | 21 | 22 | 23 | 24 |
| Rambouillet | 25 | 26 | 27 | 28 | 29 | 30 |
| Southdown | 31 | 32 | 33 | 34 | 35 | 36 |
| Suffolk | 37 | 38 | 39 | 40 | 41 | 42 |
| Other | 43 | 44 | 45 | 46 | 47 | 48 |

12. Awards/Scholarships: The following placings are eligible for added premiums/scholarships. Final premiums/scholarships will be determined based upon entries and sponsorships.

Supreme Ewe

Reserve Supreme Ewe

Supreme Ram

Breed Champion Ewes

Breed Champion Rams

Reserve Breed Champion Ewes

Reserve Breed Champion Ram

Breeding Sheep are not eligible for the Hill District Youth Auction.

Sheep Age Examples:

Aging Live Sheep

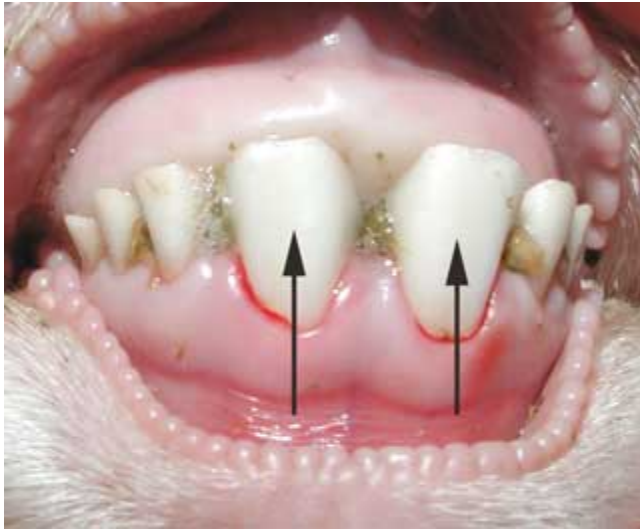
▪ Teeth are the best method of determining a live animals age



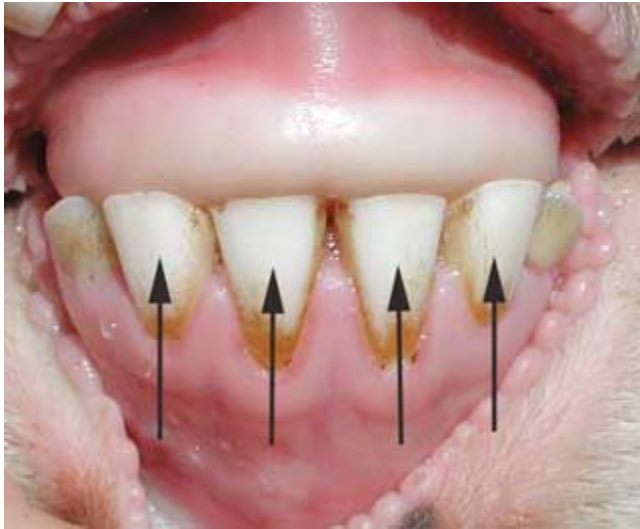
Lamb



2-Tooth or Yearling



Aged



JUNIOR MARKET BARROW SHOW

ENTRY DEADLINE: DECEMBER 1, 2025

Superintendent: Cory Rains

Judge: Cody Hayes

Location: Hill Country Youth Event Center - Kerrville, TX

SHOW SCHEDULE

| | | |
|--|------------------------------|----------|
| Arrival: | Tuesday - January 13, 2025 | 9 – 2 PM |
| Exhibitor check-in: | Tuesday - January 13, 2026 | 3 PM |
| <i>(Exhibitors who have a conflict with another Hill District Grandstand show need to contact show officials prior January 9, 2026 by 11:59 p.m. to thegrandstand21@gmail.com)</i> | | |
| Arrival deadline: | Tuesday - January 13, 2026 | 2 PM |
| Show: | Wednesday - January 14, 2026 | 8 AM |
| Release: | After Judging | |

This show is subject to the Hill District Grandstand General Rules, the Junior Livestock Show Rules and Special Rules listed in this section.

SPECIAL RULES

- 1. Entry:** An entry fee made payable to Hill District Grandstand Show is required. Entries must be submitted online through the official entry system.
- 2. Number Shown:** Each owner may enter and show up to two (2) animals in the Market Barrow Show. Only barrows are eligible to compete in this division.
- 3. Validation:** To be eligible to exhibit in the Junior Market Barrow Show, all barrows must be validated in the Texas 4-H and FFA Swine Validation Program. Each entry must have been recorded on a 4-H or FFA Swine Validation Form Master List completed by the County Level State Swine Validation Committee. Failure to comply with the rules and regulations of the Texas Swine Validation Program in any manner will result in immediate disqualification.
- 4. Show Check-in Procedures:** Exhibitors must Check-In and complete the State Validation Tag Number, Weight, and Breed Designation on the animal information form. Upon completion, the exhibitor will be given a QR code to check-in online prior to 3 PM the day of check-in. Exhibitors will return their animal information form to show officials. Once an exhibitor submits their animal information form to show officials, no changes to their entry will be allowed.
- 5. Show Weights:** Official turn-in weight limits are: minimum 230 lbs. and maximum 290 lbs. inclusive. Exhibitors will turn in the official show weight for their barrow. All barrows with weights turned in below the minimum (230 lbs.) or above the maximum (290 lbs.) will be sifted.
- 6. Re-Weigh:** Show Management reserves the right to weigh any barrow after the completion of Check-In. Upon re-weigh, all barrows weighing more or less than 10 lbs. of the official turn-in weight will be disqualified.
- 7. Classification:** Breed must be declared upon Check-In. Breed changes by the exhibitor will not be allowed at any time after. Barrows will be subject to reclassification by a three-member committee. The decision of the three-member classifying committee will be final. Barrows that are classified out of their respective division will be placed in the cross classes according to weight. See *Barrow Classification Standards*.

- 8. Health:** Any barrows found to have external parasites, open wounds, sores, skin rashes, and/or any questionable skin diseases will be disqualified at the time of classification. Barrows must be removed from the facility immediately.
- 9. Ear Tags:** All ear tags, with the exception of TX Validation Tag and USDA Official Premises Identification Number (PIN) tags, must be removed before showing. The TX Validation Tag number will be used for animal identification. No tag alterations – Any change in size, shape, form, or color will void the tag.
- 10. Ear Notches:** All animals must be properly ear notched within seven (7) days of birth with a litter notch in the right ear and individual notch in the left ear to be eligible for the Texas 4-H and FFA Swine Validation Program. Animals not properly notched in both ears will be subject to disqualification.
- 11. Fitting:** Foreign material including (but not limited to) painting, powdering, oiling, artificial coloring, or adhesives is prohibited. Water is acceptable. Trimming of swine on the show grounds is prohibited. No clippers, which require an electrical current, are allowed to be used on Market Barrows once they arrive on the grounds. Cordless clippers, razor combs and scissors are allowed, however, restraining the animal for clipping purposes is prohibited. Failure to comply with this rule will result in disqualification. The exhibitor is expected to feed, care for, fit, and exhibit their animal/project while at the Hill District Grandstand Show. If needed, the exhibitor may have the assistance of the exhibitor's family, AST, CEA, Local County/Chapter Adult Volunteer, or other 4-H or FFA members. Any project fed or cared for by a custom fitter is not eligible. A custom fitter is considered anyone who is not a family member, AST, CEA, Local County/Chapter Adult Volunteer, or another 4-H or FFA member. Violators of this rule may be barred from future participation.
- 12. Equipment:** Blocking of aisles with any kind of equipment (showboxes, feed pans, etc.) is strictly prohibited. All equipment must be stored safely above pens or in designated areas. Extension cords, fans, heat lamps and other electrical equipment are strictly prohibited. Youth exhibitors only permitted the use of 1 driving device (whip, pole, etc.) while in the show ring. *Extenuating circumstances may dictate special approval by show superintendent*
- 13. Scales:** Scales will be provided in areas throughout the barn; such scales are unofficial and are provided for exhibitors' convenience only. Official scales will be used by Superintendents to determine official weights. No other scales will be allowed.
- 14. Classes:** Superintendents will break classes following the completion of Check-In. A total of eighteen (18) market barrow classes will be set at the discretion of the superintendents based upon number of entries. There will be no pre-set weight breaks. Exhibitors missing their class are ineligible to compete in a different weight division and will be sifted. In the event of a large number of barrows with the same weight and the same breed, the show may break them into multiple classes using another method other than weight.
- 15. Placing Barrows:** 54* barrows will be eligible to sell in the Hill District Grandstand Youth Auction. Barrows eligible to sell in the Hill District Grandstand Youth Auction will be determined on a percentage basis. The percentage eligible to sell in the youth auction in each breed/division will be determined by 54 (sale slots) divided by the number of barrows entered upon arrival in the current year's show. The distribution of the 54* sale slots per breed and class will be posted at the time classes are posted. *See Youth Auction Rule #2
 - There must be a minimum of 15 head to constitute a breed. Youth will declare a breed/division when checking in. Eligible breed/divisions include: Berkshire, Duroc, Hampshire, Dark OPB, White OPB, Yorkshire, and Crossbred.
 - A judge will select barrows to be eligible for sale in breeds/divisions in which the number of sale slots is less than the number of classes in the breed/division multiplied by 2. Example: 3 sale slots are allotted based on percentage for a breed/division in which there are 2 classes. The judge would select a 3rd barrow eligible for the youth auction during their respective breed/division drive.
*The Hill District Grandstand executive board may add additional sale slots on a year to year basis to the Market Barrow show to include all 1st and 2nd place barrows. This decision will be made prior to classes being posted after superintendents break classes.
 - In cases where the number eligible to sell in the Youth Auction calculates to an odd number and cannot be evenly distributed per class in a breed/division, an additional sale slot will be distributed to

the heaviest weight class, then the 2nd heaviest weight class, then so on and so forth.

BARROW CLASSIFICATION STANDARDS

DUROC

Ideal

1. Must be red in color, possessing Duroc breed character.
2. Ears are down when hog is in a relaxed position.

Acceptable

1. Acceptable colors range from light red to dark brown.
2. Ear deformity/ear folded in a backwards position towards hog's body/crinkled ear.

Discriminatory

1. Minimal amounts of black hair.
2. Black spots on the skin under two inches in diameter.
3. Partially erect/level ears (flighty).

Absolute Disqualifications

1. Excessive amounts of black hair.
2. White hair.
3. White skin on the body or legs, or that extends over the rim of the nose.
4. Four (4) or more black spots on the skin, any of which are larger than two (2) inches in diameter.
5. Evidence of a belt.
6. Erect ears.
7. Any evidence of physical tampering that would alter breed character.

HAMPSHIRE

Ideal

1. Black in color with a full white belt over the shoulders encompassing both front legs/feet.
2. Erect ears.
3. Possess Hampshire breed character with regards to skull shape and ear shape.

Acceptable

1. Black head with a white body, with evidence of pigment and freckling down the top.
2. White belt starting on a front foot/leg; belt partially encircles body extending to at least the chest floor (half belt).
3. Freckling in the belt.
4. Ear deformity/ear folded in a backwards position towards hog's body/crinkled ear.

Discriminatory

1. Large spots within the belt.
2. Belt is in front or behind a solid black front leg.
3. If belt v's and runs towards the poll (base of the ear).
4. White tip on tail, if docked.
5. White on rear leg extends to the base of the ham.

Absolute Disqualification

1. Streaking or evidence of white on forehead.
2. White skin extends over the rim of the nose.
3. When the mouth is closed, the white under the chin cannot exceed what a U.S. minted quarter will cover.
4. Black head with a white body without freckles or pigmentation.
5. Belt extends past the sheath (sheath must be black).
6. Excessive frosting or white hair outside the belt.
7. Red hair.
8. Droopy or floppy ears.
9. Any evidence of physical tampering that would alter breed character.

YORKSHIRE

Ideal

1. Must be completely white in color with erect ears, possessing Yorkshire breed character.

Acceptable

1. Ear deformity/ear folded in a backwards position towards hog's body/crinkled ear.

Discriminatory

1. Excessively large or wavy ears.
2. Color pigmentation (on body):
 - a. Two individual pigmentation spots of which neither can be larger than a U.S. minted dime.
 - b. One pigmentation spot cannot be larger than a U.S. minted quarter.

Absolute Disqualification

1. Any hair color that is NOT white.
2. Broken/down ears.
3. Combined pigmentation spots that exceed a U.S. minted silver dollar.
4. Any series of dots that indicate masking.
5. Any evidence of physical tampering that would alter breed character.

BERKSHIRE

Ideal

1. Predominantly black with erect ears, possessing Berkshire breed character with regards to skull shape and ear shape.
2. A Berkshire should have six white points: nose, each leg/foot and at the end of tail (unless tail is docked).

Acceptable

1. An occasional splash of white skin/hair may appear on the body.
2. Three of the four legs/feet must be white.
3. Ear can have white on it (not full coverage).
4. Red or fawn hair, if over black or white skin pigmentation.
5. Ear deformity/ear folded in a backwards position towards hog's body/crinkled ear.

Discriminatory

1. Gray pigmentation on the body (spotting or mottling pattern).
2. Moderate amount of white skin splashes.

Absolute Disqualification

1. Solid white or solid black face from base of ear forward.
2. Solid black nose (white does not break rim of nose).
3. Solid white ear.
4. Excessive white on the body.
 - a. Full coverage of white coming up the lower one-third of the body (not counting legs) that extends from the base of the jaw thru sternum and lower body thru seam of the ham.
 - b. White splash extends from rear leg to upper hip.
5. White skin or hair that continuously encircles the body anywhere between the base of the ear and the base of the tail.
6. Any evidence of belt formation on the body.
7. Lacks breed character with regards to skull and/or ear shape.
8. Any evidence of physical tampering that would alter breed character.

POLAND CHINA

Ideal

1. Predominantly black possessing Poland China breed character.

2. A Poland China should have six white points: nose, each leg/foot and at the end of the tail (unless tail is docked).
3. Ears are down when hog is in a relaxed position.

Acceptable

1. A slight continuation of white from the legs to the body.
2. Ear can have white on it.
3. Three of the four legs must be white.
4. May have an occasional splash of white on the body.
5. Hair and skin texture can vary from coarse to thin, and color can vary from dark black to ashy/pale.
6. Ear deformity/ear folded in a backwards position towards hog's body/crinkled ear.

Discriminatory

1. Partially erect/level ears (flighty).
2. A moderate continuation of white from the legs to the body.
3. Moderate freestanding white, not attached to a leg.

Absolute Disqualification

1. Erect ears.
2. Solid white or solid black face.
3. More than one solid black leg.
4. If the white on a solid white ear goes past the base of the ear.
5. An excessive continuation of white from the legs, encompassing the upper hip or shoulder.
6. Excessive freestanding white, not attached to a leg.
7. Evidence of belt formation.
8. Red or sandy hair.
9. Any evidence of physical tampering that would alter breed character.

SPOTTED SWINE

Ideal

1. Must be black and white, possessing Spotted breed character.
2. Ears are down when hog is in a relaxed position.

Acceptable

1. Predominantly black with white spots or predominantly white with black spots.
2. Ear deformity/ear folded in a backwards position towards hog's body/crinkled ear.

Discriminatory

1. Partially erect/level ears (flighty).
2. Moderate brown spots.

Absolute Disqualification

1. Erect ears.
2. Solid black head from base of ears forward.
3. Distinct white belt pattern (hair or skin) encircling and extending down and onto each shoulder.
4. Red hair.
5. Excessive brown spots.
6. Any evidence of physical tampering that would alter breed character

CHESTER WHITE

Ideal

1. Solid white in color possessing Chester White breed character.
2. Medium sized ears are down when hog is in a relaxed position.

Acceptable

1. Ear deformity/ear folded in a backwards position towards hog's body/crinkled ear.

Discriminatory

1. Partially erect/level ear (flighty).

2. Skin pigmentation.

Absolute Disqualification

1. Erect ears.
2. Colored hair.
3. Color on the skin, cumulatively larger than a U.S. minted silver dollar.
4. Any evidence of physical tampering that would alter breed character.

LANDRACE

Ideal

1. Must be solid white possessing Landrace breed character.
2. Ears droop and slant forward coming to a sharper point.

Acceptable

1. Ear deformity/ear folded in a backwards position towards hog's body/crinkled ear.

Discriminatory

1. Short rounded ears.
2. Short snout mimicking that of a Chester White.

Absolute Disqualification

1. Erect ears.
2. Any hair color other than white.
3. More than 3 spots of skin pigmentation; each individual spot cannot be larger than a U.S. minted quarter.
4. Any evidence of physical tampering that would alter breed character.

CROSSBRED

1. Barrows of any coloration pattern or pigmentation are eligible for entry in this breed.

JUNIOR BREEDING PUREBRED GILT SHOW

ENTRY DEADLINE: DECEMBER 1, 2025

Superintendent: Cory Rains

Judge:

Location: Hill Country Youth Event Center - Kerrville, TX

SHOW SCHEDULE

| | | |
|---------------------|-----------------------------|---|
| Arrival: | Thursday - January 15, 2026 | 9 AM - 2 PM |
| Exhibitor check-in: | Thursday - January 15, 2026 | 9 AM - 3 PM <i>(Exhibitors who have a conflict with another Hill District Grandstand show need to contact show officials prior January 9, 2026 by 11:59 p.m. to thegrandstand21@gmail.com)</i> |
| Arrival deadline: | Thursday - January 15, 2026 | 2 PM |
| Show: | Friday - January 16, 2026 | 8:00 AM |
| Release: | After Judging | |

This show is subject to the Hill District Grandstand General Rules, the Junior Livestock Show Rules and Special Rules listed in this section.

SPECIAL RULES

- UPDATED Entry:** An entry fee made payable to Hill District Grandstand Show is required. Entries must be submitted online through the official entry system. **Gilts may not double enter in the Purebred Breeding Gilt Show and the Crossbred Gilt Show.**
- Number Shown:** Each owner may enter a maximum of six (6) head in the Junior Purebred Gilt Show. Exhibitors are limited to three (3) head per a breed.
- Ownership/Registration:** Animals must be registered in the Herdbook of their Association in the name of the Junior owner(s) on or before December 1, the year preceding the show. Purchase, delivery, possession, transfer and registration must all take place on or before December 1, the year preceding the show. Original Registration Certificates must be available at all times.
- UPDATED Validation:** To be eligible to exhibit in the Junior Purebred Gilt Show, all gilts must be validated in the Texas 4-H and FFA Swine Validation Program. Each entry must have been recorded on a 4-H or FFA Swine Validation Form Master List completed by the County Level State Swine Validation Committee. Failure to comply with the rules and regulations of the Texas Swine Validation Program in any manner will result in immediate disqualification. Exhibitors must have original registration papers uploaded to the Texas validation system by state deadline. **Exhibitors must present ORIGINAL registration papers (scramble papers will be accepted)**
- Show Check-in Procedures:** Exhibitors must Check-In and complete the State Validation Tag Number, Birthdate, and Breed Designation on the animal information form. Upon completion, the exhibitor will be given a QR code to check-in online prior to 3 PM the day of check-in. Exhibitors will return their animal information form to show officials and present their registration papers at this time. Once an exhibitor submits their animal information form to show officials, no changes to

their entry will be allowed.

6. **Fitting:** Foreign material including (but not limited to) painting, powdering, oiling, artificial coloring, or adhesives is prohibited. No clippers which require an electrical current are allowed to be used on Gilts once they arrive on the grounds. Cordless clippers are allowed, however, restraining the animal for clipping purposes is prohibited. Failure to comply with this rule will result in disqualification. The exhibitor is expected to feed, care for, fit, and exhibit their animal/project while at the Hill District Grandstand Show. If needed, the exhibitor may have the assistance of the exhibitor's family, AST, CEA, Local County/Chapter Adult Volunteer or other 4-H or FFA members. Any project fed or cared for by a custom fitter is not eligible. A custom fitter is considered anyone who is not a family member, AST, CEA, Local County/Chapter Adult Volunteer or another 4-H or FFA member. Violators of this rule may be barred from future participation.
7. **Tack:** Absolutely no tack, feed, supplies or etc. will be allowed to be stored outside the assigned pens. Tack, feed, and supplies will be allowed in or above the assigned pens.
8. **Equipment:** Blocking of aisles with any kind of equipment (showboxes, feed pans, etc.) is strictly prohibited. All equipment must be stored safely above pens or in designated areas. Extension cords, fans, heat lamps and other electrical equipment are strictly prohibited. Youth exhibitors only permitted the use of 1 driving device (whip, pole, etc.) while in the show ring. *Extenuating circumstances may dictate special approval by show superintendent*
9. **Age:** All gilts must have been farrowed between **June 1 – September 10th of the previous year.**
10. **UPDATED Classes:** Classes within each breed will be broken by weight following Check-In. The number of classes per breed will be determined following check-in and based upon the percentage of that breed to the total number of gilts in the show. Breeds included: Berkshire, Chesters, Duroc, Hampshire, Poland China, Spot, Yorkshire, OPB (Hereford & Landrace)
11. **Re-Weigh:** Show Management reserves the right to weigh any gilt after the completion of Check-In. Upon re-weigh, all gilts weighing more or less than 15 lbs. of the official turn-in weight will be disqualified.
12. **Awards/Scholarships:** The champion and reserve breed champions are eligible for added premiums/scholarships. Final premiums/scholarships will be determined based upon entries and sponsorships.
13. **Gilt Champion Drive:** All the purebred breed champion and reserve breed champion gilts will compete for Grand and Reserve Champion Purebred Gilt. The Grand and Reserve Champion Crossbred Gilt will compete against the Purebred Gilt Grand and Reserve Champion Gilt for Supreme and Reserve Supreme Champion Gilt

Gilts are not eligible for the Hill District Youth Auction.

JUNIOR BREEDING CROSSBRED GILT SHOW

ENTRY DEADLINE: DECEMBER 1, 2025

Superintendent: Cory Rains

Judge:

Location: Hill Country Youth Event Center – Kerrville, TX

SHOW SCHEDULE

| | | |
|---------------------|-----------------------------|---|
| Arrival: | Thursday - January 15, 2026 | 9 AM - 2 PM |
| Exhibitor check-in: | Thursday - January 15, 2026 | 9 AM - 3 PM <i>(Exhibitors who have a conflict with another Hill District Grandstand show need to contact show officials prior January 9, 2026 by 11:59 p.m. to thegrandstand21@gmail.com)</i> |
| Arrival deadline: | Thursday - January 15, 2026 | 2 PM |
| Show: | Friday - January 16, 2026 | 8:00 AM |
| Release: | After Judging | |

This show is subject to the Hill District Grandstand General Rules, the Junior Livestock Show Rules and Special Rules listed in this section.

SPECIAL RULES

- 1. UPDATED Entry:** An entry fee made payable to Hill District Grandstand Show is required. Entries must be submitted online through the official entry system. **Gilts may not double enter in the Purebred Breeding Gilt Show and the Crossbred Gilt Show.**
- 2. Number Shown:** Each exhibitor may enter a maximum of three (3) in the Junior Crossbred Gilt Show.
- 3. Validation:** To be eligible to exhibit in the Junior Crossbred Gilt Show, all gilts must be validated in the Texas 4-H and FFA Swine Validation Program. Each entry must have been recorded on a 4-H or FFA Swine Validation Form Master List completed by the County Swine Validation Committee. Failure to comply with the rules and regulations of the Texas Validation Program in any manner will result in immediate disqualification.
- 4. Show Check-in Procedures:** Exhibitors must Check-In and complete the State Validation Tag Number, and Weight on the animal information form. Upon completion, the exhibitor will be given a QR code to check-in online prior to 3 PM the day of check-in. Exhibitors will return their animal information form to show officials. Once an exhibitor submits their animal information form to show officials, no changes to their entry will be allowed.
- 5. Show Weights:** Official turn-in weight limits are: minimum 210 lbs. and no maximum weight inclusive. Exhibitors will turn in the official show weight for their gilts. All gilts with weights turned in below the minimum (210 lbs.) will be sifted. Weight changes will not be allowed at any time after Check-In.
- 6. Re-Weigh:** Show Management reserves the right to weigh any gilt after the completion of Check-

- In. Upon re-weigh, all gilts weighing more or less than 15 lbs. of the official turn-in weight will be disqualified.
7. **Ear Tags:** All ear tags, with the exception of TX Validation Tag and USDA Official Premises Identification Number (PIN) tags, must be removed before showing. The TX Validation Tag number will be used for animal identification. No tag alterations- Any change in size, shape, form, or color will void the tag.
 8. **Ear Notches:** All animals must be properly ear notched within seven (7) days of birth with a litter notch in the right ear and individual notch in the left ear to be eligible for the Texas 4-H and FFA Swine Validation Program. Animals not properly notched in both ears will be subject to disqualification.
 9. **Fitting:** Foreign material including (but not limited to) painting, powdering, oiling, artificial coloring, or adhesives is prohibited. No clippers which require an electrical current are allowed to be used on Gilts once they arrive on the grounds. Cordless clippers are allowed, however, restraining the animal for clipping purposes is prohibited. Failure to comply with this rule will result in disqualification. The exhibitor is expected to feed, care for, fit, and exhibit their animal/project while at the Hill District Grandstand Show. If needed, the exhibitor may have the assistance of the exhibitor's family, AST, CEA, Local County/Chapter Adult Volunteer or other 4-H or FFA members. Any project fed or cared for by a custom fitter is not eligible. A custom fitter is considered anyone who is not a family member, AST, CEA, Local County/Chapter Adult Volunteer or another 4-H or FFA member. Violators of this rule may be barred from future participation.
 10. **Scales:** Scales will be provided in areas throughout the barn; such scales are unofficial and are provided for exhibitors' convenience only. Official scales will be used by Superintendents to determine official weights. No other scales will be allowed.
 11. **Tack:** Absolutely no tack, feed, supplies or etc. will be allowed to be stored outside the assigned pens. Tack, feed, and supplies will be allowed in or above the assigned pens.
 12. **Equipment:** Blocking of aisles with any kind of equipment (showboxes, feed pans, etc.) is strictly prohibited. All equipment must be stored safely above pens or in designated areas. Extension cords, fans, heat lamps and other electrical equipment are strictly prohibited. Youth exhibitors only permitted the use of 1 driving device (whip, pole, etc.) while in the show ring. *Extenuating circumstances may dictate special approval by show superintendent*
 13. **UPDATED Classes:** Superintendents will break classes after all weights have been turned in. A minimum of six (6) crossbred gilt classes broken into a light and dark division will be set at the discretion of the superintendent based upon weight. In the event of a large number of gilts with the same weight, the show may break them into multiple classes using another method other than weight.
 14. **Awards/Scholarships:** The champion and reserve champion crossbred gilt are eligible for added premiums/scholarships. Final premiums/scholarships will be determined based upon entries and sponsorships.
 15. **Gilt Champion Drive:** All class winners in the crossbred gilt division will compete for the Grand and Reserve Champion crossbred gilt. The Grand and Reserve Champion Crossbred Gilt will compete against the Purebred Gilt Grand and Reserve Champion Gilt for Supreme and Reserve Supreme Champion Gilt.

JUNIOR MARKET STEER SHOW

ENTRY DEADLINE: DECEMBER 1, 2025

Superintendent: Duane Zoeller

Judge: Macy Scotten

Location: Kendall County Youth Agriculture & Equestrian Center – Welfare, TX

SHOW SCHEDULE

| | | |
|---------------------|----------------------------|---|
| Arrival: | Monday - January 12, 2026 | 9 AM - 2 PM |
| Exhibitor check-in: | Monday - January 12, 2026 | 9 AM - 3 PM <i>(Exhibitors who have a conflict with another Hill District Grandstand show need to contact show officials prior January 9, 2026 by 11:59 p.m. to thegrandstand21@gmail.com)</i> |
| Arrival deadline: | Monday - January 12, 2026 | 2 PM |
| Classification: | Monday - January 12, 2026 | 3:30 PM |
| Show: | Tuesday - January 13, 2026 | Following conclusion of heifer show |
| Release: | After Judging | |

This show is subject to the Hill District Grandstand General Rules, the Junior Livestock Show Rules and Special Rules listed in this section.

SPECIAL RULES

- Entry:** An entry fee made payable to Hill District Grandstand Show is required. Entries must be submitted online through the official entry system.
- Number Shown:** Each owner may enter and show up to two (2) head in the Market Steer Show.
- Validation:** To be eligible to exhibit in the Junior Market Steer Show, all steers must be validated in the Texas 4-H and FFA Steer Validation Program. Each entry must have been recorded on a 4-H or FFA Steer Validation Form Master List completed by the County Level State Steer Validation Committee. Failure to comply with the rules and regulations of the Texas Steer Validation Program in any manner will result in immediate disqualification.
- Show Check-in Procedures:** Exhibitors must Check-In and complete the State Validation Tag Number, Weight, and Breed Designation on the animal information form. Upon completion, the exhibitor will be given a QR code to check-in online prior to 3 PM the day of check-in. Exhibitors will return their animal information form to show officials. Once an exhibitor submits their animal information form to show officials, no changes to their entry will be allowed.
- Show Weights:** Exhibitors will turn in the official show weight for their steer. Steers must have an official turn in weight of a minimum of 950. All steers with weights turned in below the minimum weight requirements will be sifted.
- Re-Weigh:** Show Management reserves the right to weigh any steer after the completion of Check-In. Upon re-weigh, steers weighing more or less than 5% of the official turn-in weight will be disqualified.

7. **Classification:** At the time of official weigh-in and classification a 3-person classification team will determine breed and their appropriate classes will be determined for each steer. The decision of the classifier is final, and no protest will be accepted.
8. **Ear Tags:** All ear tags except the TX validation tag must be removed before steers enter the classifying area. The TX Validation Tag number will be used for animal identification. No tag alterations – Any change to size, shape, form, or color will void the tag.
9. **Horns:** Steers must be dehorned, polled, or scurred. Scurs/horn growth must not exceed three inches from the base of the head.
10. **Fitting:** Foreign material including (but not limited to) painting, powdering, oiling, artificial coloring, or adhesives is prohibited. Touch-up clipping with cordless clippers or scissors will be allowed. The decision of the Superintendents will be final and cannot be protested. The exhibitor is expected to feed, care for, fit, and exhibit their animal/project while at the Hill District Grandstand Show. If needed, the exhibitor may have the assistance of the exhibitor’s family, AST, CEA, Local County/Chapter Adult Volunteer or other 4-H or FFA members. Any project fed or cared for by a custom fitter is not eligible. A custom fitter is considered anyone who is not a family member, AST, CEA, Local County/Chapter Adult Volunteer or another 4-H or FFA member. Violators of this rule may be barred from future participation.
11. **Pumping:** No pumping will be allowed in the Junior Market Steer Show.
12. **Age:** Steers with permanent teeth are eligible to show.
13. **Unruly Cattle:** Steers must be kept under control at all times. At the discretion of the superintendent or any committee member any steer that presents a danger to exhibitors or spectators will be disqualified and must be removed from the grounds. No protests will be accepted.
14. **Classes:** Superintendents will break classes following the completion of Check-In. A total 13 market steer classes will be set at the discretion of the superintendents based upon number of entries. There will be no pre-set weight breaks. Exhibitors missing their class are ineligible to compete in a different weight division and will be sifted.
15. **Placing Steers:** All breed champions, reserve breed champions, and 1st place market steers are eligible to sell in the Hill District Grandstand Youth Auction unless the exhibitor has qualified for the sale with another species within the Hill District Grandstand Show. *See Youth Auction Rule #2

JUNIOR BREEDING HEIFER SHOW

ENTRY DEADLINE: DECEMBER 1, 2025

Superintendent: Duane Zoeller

Judge: Macy Scotten

Location: Kendall County Youth Agriculture & Equestrian Center – Welfare, TX

SHOW SCHEDULE

| | | |
|--|----------------------------|-------------|
| Arrival: | Monday - January 12, 2026 | 9 AM - 2 PM |
| Exhibitor check-in: | Monday - January 12, 2026 | 9 AM - 3 PM |
| <i>(Exhibitors who have a conflict with another Hill District Grandstand show need to contact show officials prior January 9, 2026 by 11:59 p.m. to thegrandstand21@gmail.com)</i> | | |
| Arrival deadline: | Monday - January 12, 2026 | 2 PM |
| Show: | Tuesday - January 13, 2026 | 8 AM |
| Release: | After Judging | |

This show is subject to the Hill District Grandstand General Rules, the Junior Livestock Show Rules and Special Rules listed in this section.

SPECIAL RULES

- 1. Entry:** An entry fee made payable to Hill District Grandstand Show is required. Entries must be submitted online through the official entry system.
- 2. Number Shown:** Each owner may enter and show up to two (2) entries per a breed (American, British, European).
- 3. Validation:** To be eligible to exhibit in the Junior Heifer Show, all heifers must be validated in the Texas 4-H and FFA Heifer Validation Program. Each entry must have been recorded on a 4-H or FFA Heifer Validation Form Master List completed by the County Level State Heifer Validation Committee. Failure to comply with the rules and regulations of the Texas Heifer Validation Program in any manner will result in immediate disqualification.
- 4. Ownership/Registration:** Animals must be registered in the Herdbook of their Association in **only** the name of the Junior owner on or before November 1, the year preceding the show. Purchase, delivery, possession, transfer, and registration must all take place on or before November 1, the year preceding the show. Original Registration Certificates must be available at all times.
- 5. Check-In:** Exhibitors must Check-In and complete the State Validation Tag Number, Birthdate, and Breed Designation on the animal information form. Upon completion, the exhibitor will be given a QR code to check-in online prior to 3 PM the day of check-in. Exhibitors will return their animal information form to show officials and present their registration papers at this time. Once an exhibitor submits their animal information form to show officials, no changes to their entry will be allowed.
- 6. Classes:** Classes within the American, British, and European divisions will be done by age at the

discretion of the superintendent.

- a. American (Includes the following registered breeds: Beefmaster, Brahman, Brangus, Red Brangus, Santa Gertrudis, Simbrah, or any other American influenced registered breed)
 - b. British (Includes the following registered breeds: Angus, Hereford, Polled Hereford, Red Angus, or Shorthorn)
 - c. European (Includes the following registered breeds: Charolais, Chianina, Limousin, Maine-Anjou, Simmental or any other European influence Registered breeds)
7. **Fitting:** This is a “Blow and Go” Show. Grooming or fitting with foreign material that includes (but not limited to) painting, powdering, oiling, artificial coloring, or adhesives is prohibited. The exhibitor is expected to feed, care for, fit, and exhibit their animal/project while at the Hill District Grandstand Show. If needed, the exhibitor may have the assistance of the exhibitor’s family, AST, CEA, Local County/Chapter Adult Volunteer or other 4-H or FFA members. Any project fed or cared for by a custom fitter is not eligible. A custom fitter is considered anyone who is not a family member, AST, CEA, Local County/Chapter Adult Volunteer or another 4-H or FFA member. Violators of this rule may be barred from future participation.
 8. **Trim Chutes:** No trim chutes are permitted on the grounds during the Junior Heifer or Market Steer Show.
 9. **Unruly Cattle:** Heifers must be kept under control at all times. At the discretion of the superintendent or any committee member any heifer that presents a danger to exhibitors or spectators will be disqualified and must be removed from the grounds. No protests will be accepted.
 10. **Awards/Scholarships:** The champion and reserve breed champion heifers are eligible for added premiums/scholarships. Final premiums/scholarships will be determined based upon entries and sponsorships. Heifers are not eligible for the Hill District Grandstand Youth Auction.

JUNIOR TURKEY SHOW

ENTRY DEADLINE: DECEMBER 1, 2024

Superintendent: Dennis Ellebracht

Judge: Jason Lee

Location: Gillespie County Fairgrounds – Fredericksburg, TX

SHOW SCHEDULE

| | | |
|--|-----------------------------|-------------|
| Arrival: | Thursday - January 15, 2026 | 8 AM - 9 AM |
| Exhibitor check-in: | Thursday - January 15, 2026 | 9 AM |
| <i>(Exhibitors who have a conflict with another Hill District Grandstand show need to contact show officials prior January 9, 2026 by 11:59 p.m. to thegrandstand21@gmail.com)</i> | | |
| Arrival deadline: | Thursday - January 15, 2026 | 9 AM |
| Show: | Thursday - January 15, 2026 | 10 AM |
| Release: | After Judging | |

This show is subject to the Hill District Grandstand General Rules, the Junior Livestock Show Rules and Special Rules listed in this section.

SPECIAL RULES

- Entry:** An entry fee made payable to Hill District Grandstand Show is required. Entries must be submitted online through the official entry system.
- Number Shown:** Each owner may enter and show up to two (2) entries: one tom and one hen.
- Turkey Orders:** All turkey poults must have been ordered by September 1, 2021, through Texas A&M University's Poultry Science Department in accordance with "The Rules and Procedures" found on the website at posc.tamu.edu. For clarification of any part of the Rules and Ordering Procedures, please contact Texas A&M AgriLife Poultry Science Extension Office at 979-845-4319
- Wing Bands:** The sifter and judge will disregard any wing damage caused by the required wing band.
- Handlers:** Must meet the eligibility requirements outlined in Rule 1 of the Junior Show Rules. Additionally, handlers must have at least one (1) entry within any department in the current Junior Livestock Show.
- Fans:** Fans will not be permitted
- Medication:** The showing of any poultry that has been administered any quantity of diuretic, unapproved growth stimulant or other unapproved medication, or that has NOT been properly withdrawn from approved drugs is prohibited. Unapproved is deemed to mean NOT approved by the Food and Drug Administration (FDA) and/or the U.S. Department of Agriculture (USDA) for slaughter animals. As a condition for participation in the Show, every exhibitor must agree to submit any poultry entered by exhibitor to inspection by a veterinarian appointed by the management, and agrees to have such poultry submitted to any tests as may be designated and requested by the veterinarian. The Show specifically reserves the right to have tissue, blood or urine

laboratory analysis made on any poultry entered for competition. The conclusions reached by the veterinarian, as to whether such animal has been administered a diuretic, unapproved growth stimulant or other unapproved drugs, or has not been properly withdrawn from approved drugs shall be final, without recourse against the Show or any of its officers. An exhibitor of poultry producing an analysis with a quantity of diuretic, unapproved growth stimulant or any other unapproved drugs will forfeit all rights and privileges to exhibit livestock including poultry in the future at the Show.

8. **Beta-agonists:** The Hill District Grandstand Show will not tolerate the presence of ractopamine hydrochloride (Topmax™) in Market Poultry, specifically all turkeys and broilers. The Hill District Grandstand Show will not tolerate the presence of zilpaterol hydrochloride (Zilmax®) in any market species or breeding animal.
9. **UPDATED Placing Turkey:** Champion and Reserve Champion overall Turkey are eligible to sell in the Hill District Grandstand Youth Auction unless the exhibitor has qualified for the sale with another species within the Hill District Grandstand Show. *See Youth Auction Rule #2
10. **Awards/Scholarships:** The top 20 placing turkeys (10 toms & 10 hens) are eligible for added premiums/scholarships. Final premiums/scholarships will be determined based upon entries and sponsorships.. **Exhibitors will only be allowed premium/scholarships for one qualifying placing.**

JUNIOR AG MECHANICS PROJECT SHOW

ENTRY DEADLINE: DECEMBER 1, 2025

Superintendent: Mark Dunning

Location: Hill Country Youth Event Center – Kerrville, TX

SHOW SCHEDULE

| | | |
|---------------------|---|---|
| Arrival: | Tuesday - January 20, 2026 | 12 – 6 PM |
| Exhibitor check-in: | Tuesday - January 20, 2026 | At time of arrival & prior to unloading |
| Arrival deadline: | Tuesday - January 20, 2026 | 6 PM |
| Show: | Wednesday - January 21, 2026 | 8 AM |
| Release: | After Awards *All projects must be removed from the grounds by 9 PM) | |

This show is subject to the Hill District Grandstand General Rules, the Junior Livestock Show Rules and Special Rules listed in this section.

SPECIAL RULES

- 1. Entry:** An entry fee made payable to Hill District Grandstand Show is required. Entries must be submitted online through the official entry system. The Ag Mechanics Project Show is open to all youth exhibitors in the state of Texas provided they meet all other eligibility requirements as stated in the general rules.
- 2. Projects:** Projects must be constructed by FFA or 4-H members. FFA projects must be constructed as part of their agriculture mechanics instruction in agriculture science or as part of their supervised work experience program under the supervision of the Agriculture Science Instructor. 4-H projects must be constructed under the supervision of the County Extension Agent, Project Leader or Adult Leader, (AST, CEA, Project Leader or Adult Leader must be in one of the pictures during project construction.)
- 3. Ownership/Construction:** Projects may be either individually or group constructed and owned. Club/chapter Entries: Group entries must be made in the name of the FFA Chapter or 4-H Club. All group projects must include all the names of the exhibitors who participated in planning and construction of the project. Individual entries must be submitted by the CEA/AST on an official entry form and include the owner/builder and planner.
- 4. Exhibit Space:** Projects will be displayed in front of the Exhibition Barn. Placement of projects will be at the discretion of the show officials. (IN THE EVENT THAT WE HAVE MORE PROJECTS THAN CAN BE EXHIBITED IN THE BARN. THE TRAILERS MAY BE PLACED OUTSIDE.)
- 5. Construction Date:** A project may be exhibited only one time at the Hill District Grandstand Show and must have been constructed within one calendar year of the exhibition date.
- 6. Types of Projects:** Any project that does not fit into one of the stated classes will be disqualified. Projects must be classified in one of the following divisions and classes. (The Ag Mechanics Committee reserves the right to reclassify any project.)

Division: Trailers

Class:

- 100-Stock Trailers
- 101-Gooseneck Trailers or Kingpin Trailers
- 102-Utility Trailers
- 103-All Other Trailers (Including Hay Trailers)

Division: Agriculture Machinery & Equipment

Class:

- 200-Shop Equipment
- 201-Pull Type or Tractor Mounted Equipment
- 202-Other Equipment

Division: Pickup and Truck Accessories

Class:

- 300-Bumpers, Headache Racks, Grill Guards, etc.
- 301-Pickup or Truck Flat Beds
- 302-Other

Division: Livestock & Wildlife Equipment

Class:

- 400-Gates & Livestock Panels
- 401-Restraining Livestock & Wildlife Equipment
- 402-All other Livestock or Wildlife Equipment

Division: Home Convenience

Class:

- 500-Wood Projects -- Outdoor & Indoor Wood Furniture
- 501-Wood or Metal Projects -- Outdoor & Indoor Wood Furniture
- 502-Metal Furnishings & Non-towable cooking devices (without lugs)
- 503-Towable Outdoor Cooking Equipment (with lug bolts)

Division: Tractor Restoration

Class:

- 600-Tractor Restoration

7. **Classes:** Superintendents can combine classes with fewer than four (4) entries.
8. **Vehicles:** No trucks, non-entered trailers or other pieces of equipment are allowed in the exhibit area.
9. **Loading Assistance:** Projects that need to be lifted from the topside are to be fitted with lifting eyes at balance points that accommodate 1” shackles. Projects that cannot be safely unloaded will be shown on the vehicle that the project was hauled on.
10. **Safety:** All safety procedures must be adhered to when displaying projects but not limited to:
 - A. Appropriate and safe display stands provided for gates, panels, and other projects needing support.
 - B. Sharp edges and points (as on feeder roofs, bale movers, etc) Must be padded or covered to prevent injury.
 - C. All trailers and other equipment that are operated on or transported on public roads must be equipped with safety equipment as stated in the latest Department of Transportation (DOT)

publication. All trailers will be DOT inspected on arrival. The results of that inspection will be made available to the Judges. All three-point hitch and PTO operated equipment is to meet ASAE standards and specifications. All trailers and towable cookers must not exceed 102” DOT widths or have a permit. All trailers will have safety chains (FAILURE TO MEET THESE STANDARDS WILL RESULT IN THE PROJECT BEING GRADED ONE QUALITY GRADE LOWER)

- 11. Project Completeness:** All projects should be complete including finish. No paint or other finish may be applied after arrival on show grounds. Projects are to be clean, free of dust and debris, and in a presentable condition even though they may have been used. Any item, necessary for use of the project, must be a part of it (example: hinges and latches on gates and panels etc. Trailers and all other equipment are to be displayed in transportation position. Ramps, extensions and operation of specific features may be demonstrated as directed by the official judges and as space allows. The project display area around and under the project must be neat.
- 12. Welds:** No structural welds are to be ground without penalty. Grinding is to be limited to welds that should be ground for functional reasons and or welds that would normally be ground for cosmetic purposes. Examples: top rails on trailers, fender body outside tops, slide latches, etc. may be ground, but frames, cross members, tongues, filler pipe, etc. are not to be ground.
- 13. Exhibitor Presentation:** Exhibitors should be dressed appropriately and be with their project when it is judged. Exhibitors should be courteous and helpful to those viewing their project including the public, show officials and judges. Exhibitors should not interfere with or shield those exhibiting next to them. Exhibitors will be allowed cleaning or preparation supplies, limited to quantities that will fit in a common 5 gallon bucket, in the exhibition area. Only exhibitors are allowed at the project during judging. (Parents, advisors, agents, project leaders or adult leaders are not allowed in the immediate area of their projects while they are being judged.)
- 14. Cleaning:** Cleaning of projects will be limited to the use of spray bottles and towels
- 15. Signs:** All projects are to be identified. Information should include - Exhibitor(s) Name, Club/Chapter, and Project Description. Additional signs, banners, etc. must meet the approval of the committee members and cannot extend beyond the project’s display space.
- 16. Loss and Damage:** Every precaution will be taken to protect the projects entered; however, neither the Hill Country District Junior Livestock Show Association nor the officials of this contest will be responsible for fire, theft, vandalism or destruction to projects.
- 17. Plans, Bills of Materials, Photographs:** Exhibitors should provide an original, exhibitor drawn plan, photographs showing stages of production and a complete bill of materials. Student Knowledge: Exhibitors may be asked questions concerning, but not limited to, project construction, design, use, operation, etc. Exhibitors may be asked to demonstrate all or part of the project operation. (AST, CEA, Project Leader, Adult Leader must be in at least one photo during construction)
- 18. Judging System for Five Divisions:** (Danish System will be used for judging the projects.)

Criteria Points

- | | |
|---------------------------------------|----|
| a. Workmanship..... | 30 |
| b. Design and Materials used..... | 20 |
| c. Practicality | 20 |
| d. Degree of Difficulty | 10 |
| e. General Appearance and Finish..... | 10 |

f. Documentation and Presentation 10

19. Judging for Tractor Division:

a. Mechanical..... 50

b. Aesthetics..... 20

c. Originality..... 10

d. Safety Equipment..... 10

e. Documentation.....10

A. Mechanical will include the restoration of engine, transmission, final drive, fuel system, cooling system, cranking or starting system, charging system, hydraulic system, steering system, etc.

B. Aesthetics will include the overall appearance of the tractor. This includes workmanship and finish. Items to be considered include, but are not limited to: metal preparation, completeness of sheet metal, paint and finish, detail and completeness of components such as wheels, tires, steering wheels, seats, decals, instrument panels, wiring harness, etc.

C. Originality will include paint color, fasteners, electrical systems, fuel systems, exhaust systems, mechanical systems, original unaltered serial places, etc.

D. Safety equipment will include all equipment that was original to the tractor. It also includes the provision of drip pans containing floor absorbent to collect any liquids that may drop from the tractor during display. Fuel shutoff valves under all fuel tanks must be functional and tractors are to be exhibited with the valves closed. An ABC fire extinguisher with a minimum of 2.5 pounds capacity must be provided with each tractor. Extra fuel may not be stored in the arena. Tractor engines are to be started and run only at the request of judges or show officials.

E. Documentation must be typed or computer generated and is to include a one page description of the overall restoration project, and expense report identifying all costs of restoration, photos showing before, during and after restoration that shows safe working environment, and a complete description of all mechanical work performed. All documentation is to be displayed in a three- ring binder, divided, and sequenced with a table of contents and page numbers. The National FFA Tractor Restoration Competition format and forms may be used.

F. A tractor restoration project can be exhibited only one time at the Hill District Grand Junior Agricultural Mechanics Project Show and must have been constructed within two calendar years of the exhibition date.

20. Showmanship: Awards will be presented to schools/clubs and individuals selected as having presented the best public image by an independent judge. Judging will begin at unloading and continue until judging is completed. There will be two categories: group and individual. Champion and Reserve Champion will be given in each category.

Considerations will be, but not limited to:

a. Appropriate display and presentation of the project.

b. Appropriate display of project plans, bill of materials and photographs.

c. Housekeeping around project.

d. Appropriate dress

e. Conduct, attitude, and participation of students

21. Awards: Blue, Red and White ribbons will be given for quality. Blue ribbon projects will be judged for 1st and 2^{nds} in class.

22. Sweepstakes: Awarded to the FFA Chapter or 4-H club that accumulates the most points based on the number of entries with each placing and division champions and Reserve Champions.

Points:

Grand Champion - 7 points

Reserve Champion - 6 points

Division Champion - 5 points

Reserve Division Champion - 4 points

1st Place – 3 points

2nd Place – 2 points

Champion Showmanship- 4 points

Reserve Showmanship- 3 points

* Failure to cooperate with show officials or other exhibitors by an individual or group will result in disqualification of the chapter or club for the Sweepstakes Award.

23. Sale of Projects: Absolutely no sales of projects will occur on the grounds of the Hill District Grandstand Show. Projects will be release only to authorized personnel with signed release forms.

ENTRY DEADLINE: 7:00 P.M. – Tuesday, January 20, 2026

Superintendent: Mark Dunning

Location: Hill Country Youth Event Center – Kerrville, TX

SHOW SCHEDULE

Contest: Wednesday - January 21, 2026 12 PM

This show is subject to the Hill District Grandstand General Rules, the Junior Livestock Show Rules and Special Rules listed in this section.

SPECIAL RULES

1. **Entry:** An entry fee made payable to Hill District Grandstand Show is required. Entries must be submitted online. The Fastest Torch in the Hill Country Contest is open to all youth exhibitors in the state of Texas provided they meet all other eligibility requirements as stated in the general rules.
2. **Contest Format:** Students participating in the contest will be paired by a drawing that will randomly place participants in a bracket that will remain the same for the entire contest. Irregular numbers of students may require the bracket to include some “bye” slots be added to complete the bracket.
 - In each round students will light their own torch, adjust to a neutral flame, and make the cut required in that round. Regulators will be preset by contest officials. The student whose metal falls to the ground first advances to the next round and the other student will be eliminated. Any attempt to force the cut to fall by any action other than gravity (tapping with the torch tip, jarring the table, forcing with the hand, etc.) will result in that student being disqualified.
3. **Safety:** Safety equipment will be provided. Students choosing to use their own may do so. TWO high cuff gloves, safety glasses and a face shield must be worn while cutting. Eyewear must meet minimum Z87 standards. Students will be responsible for appropriate clothing. Long pants, closed toed shoes, and a long sleeved cotton shirt are required. Judges decision on appropriate clothing will be final.
4. **Equipment Issues:** If judges determine that a tip is dirty, both tips will be cleaned by contest officials prior to the next round. Equipment malfunctions that cause an unfair advantage to one contestant may result in a “re-ride” if judges deem it appropriate.
5. Metal to be provided by the contest. Preliminary rounds will cut flat metal, approximately 4 inches wide and approximately 3/8 thick. As the contest progresses contestants will be expected to make cuts on pipe, angle iron, channel iron, I-beam, bulb plate or T-bar. Piercing cuts may be required in later rounds. At no point will metal be cut to exceed 1/2 inch thickness
6. Prior to making their cuts students will be permitted to arrange metal, loses, and strikers on their worktable for their own comfort. Judges will announce “go” to begin cuts in each round. Cut lines will be pre-marked by the judges.
7. If during the contest a student is called for and is not present for his turn, he will be eliminated and his competitor in that round will advance. Every effort will be made to accommodate students with other showing obligations and show officials may change the order of the brackets to help students participate.
8. Contestants may choose the torch/table they use to cut on. If both students choose the same station, a coin flip will determine student placement.
9. Participation in the contest will be limited to students that have submitted entries in the Ag Mechanics Division of the Hill Country Grandstand Show.

10. Decisions of the contest officials as they pertain to safety and details of the contest are final.

ENTRY DEADLINE: JANUARY 9, 2026

***Late entries accepted day of contest.**

Superintendent: Patrick Padgett

CONTEST SCHEDULE

| | | |
|-----------|--|-----------|
| Check-In: | Friday - January 16, 2026 | 9 – 10 AM |
| Contest: | Friday - January 16, 2026 | 10 AM |
| Awards: | Following the completing of each division. | |

*Results will be posted on www.judgingcard.com at the conclusion of awards.

This contest is subject to the Hill District Grandstand Show, the General Rules, Junior Livestock Show Rules, and Special Rules listed in this section.

SPECIAL RULES

- 1. Entry:** An entry fee made payable to Hill District Grandstand Show is required. Entries must be submitted online through Judging Card. Participants can enter on the day of contest during check-in for a late fee (\$30).
- 2. Eligibility:** Entries in this division are limited to Texas FFA and 4-H members. Any contestant violating any rule will be disqualified from the contest. Teams must consist of members from the same county or chapter. Team members may only compete on one team.
- 3. Age Divisions:** Junior Division participants must be at least 8 years old and be in 3rd – 8th grade for the current school year. Senior Division participants must be in at least the 9th grade, but no more than the 12th grade. A junior age division contestant may move up to compete on a senior team. This will make the junior contestant ineligible for any junior division awards.
- 4. Contest Format:** Contestants will judge up to 10 classes of four (4) animals each. The classes will be made up of animals representing the following species: Cattle, Goats, Sheep, and Swine. Contestants will have a maximum of 12 minutes to observe and complete their scan sheet.
- 5. Scoring:** The three (3) high scores will determine the teams' score. Team members are eligible for individual awards. The contestant with the lower score will be designated as alternate but will be eligible to receive individual awards. Scan sheets will be provided. Universal A scan sheets will be used. All contestants must provide their own #2 pencil and may bring an unmarked clipboard, steno pad and/or manila folder for use during the contest. **Scan sheets that are folded, bent or abused and will not read will not be scored.**
- 6. Conduct of Contestants:**
 - There will be no talking between contestants during the contest. Violating this rule may cause the contestants and their teams to be disqualified and ineligible to receive awards.
 - Only contestants and contest officials will be permitted in the contest area during the contest. Coaches and alternates may be permitted to see the classes after the judging is completed.
 - Contestants must have their group letter clearly visible on their clothing.

- No smart watches or electronic devices are permitted at any time
- **Awards/Scholarships:**

7. Awards/Scholarships:

- Champion Sr. Division Team Overall through 5th place
- Champion Sr. Division Individual Overall through 10th place
- Champion Jr. Division Team Overall through 5th place
- Champion Jr. Division Individual Overall through 10th place

Release of Liability and Indemnity Agreement

In consideration, the receipt and sufficiency of which is hereby acknowledged, for being allowed entry into and participation in activities (the “Activities”) associated with the Hill District Grandstand Show, hereinafter “HDGS”, the undersigned hereby enters into this **RELEASE OF LIABILITY AND INDEMNITY AGREEMENT** (this “Agreement”) as of the date set forth below:

1.ACKNOWLEDGEMENT OF RISKS: The undersigned recognizes and understands that there are risks associated with their participation in the Activities including, but not limited to, bodily injury or death to persons and damage to property. The undersigned further acknowledges and understands that they will be held liable and responsible for any and all damage to persons, livestock, vehicles, property and/or improvements to property that is caused by them and/or any persons (including, but not limited to, minors) under their care and control, and that arise out of, or are related to, the undersigned’s entry into and participation in the Activities. **2.APPLICABILITY AND SCOPE OF RELEASES AND INDEMNITIES:** For purposes of this Agreement, “Claims” shall mean any past, present and future claims, losses, costs, expenses, liabilities, demands, or causes of action, and costs of defense or settlement (including, without limitation, attorneys’ fees and court costs). For purposes of this Agreement, the term “Released Parties” shall mean HDGS, the Cities of Fredericksburg, Llano, Comfort, and Kerrville, Texas, Gillespie, Llano, Kendall, and Kerr Counties, State of Texas and their respective present and former officers, directors, members, council members, commissioners, subsidiaries, affiliates, employees, staff, volunteers, agents and any other person, firm, corporation or entity bound to defend or pay judgments against them. The releases, waivers and indemnities contained in this Agreement expressly shall apply regardless of whether the Claims to be released, waived or indemnified against arise, or are alleged to arise, from (i) NEGLIGENCE (WHETHER SOLE, JOINT OR CONCURRENT), GROSS NEGLIGENCE, NEGLIGENCE PER SE, and/or STRICT LIABILITY, of the Released Parties; (ii) personal injury, death or property damage; (iii) acts under the Texas Deceptive Trade Practices Act (“DTPA”); (iv) acts of any other persons or guests; (v) theft, burglary, assault, or other crimes; (vi) fire, water, wind, rain and/or smoke and /or (vii) any other risks and hazards associated with the undersigned’s entry into and participation in the Activities, including, but not limited to, the general conditions at the Activities, animals both wild and domestic that may be diseased and/or potentially dangerous, persons with firearms both on and off the premises used in connection with the Activities, and the driving or riding in any vehicles, whether belonging to Released Parties or to other persons. **3.RELEASE FROM LIABILITY:** The undersigned hereby releases, acquits and forever discharges any and all Claims against any of the Released Parties that arise from or relate to their entry and participation in the Activities—including, but not limited to, the types of claims enumerated in Paragraph 2—and agree not to sue any of the Released Parties for such Claims. Without limiting the foregoing, the undersigned agrees that the Released Parties shall not be liable to them, their family, agents, employees or their guests, for personal injury, property damage, or any other Claims arising from or related to the undersigned’s entry into and participation in the Activities. **4.AGREEMENT TO INDEMNIFY AND HOLD HARMLESS:** The undersigned agrees to INDEMNIFY and HOLD HARMLESS the Released Parties against any and all Claims arising from or related to the undersigned’s entry and participation in the Activities—including, but not limited to, the types of Claims enumerated in Paragraph 2. In addition, and without limiting the foregoing, the undersigned agrees to INDEMNIFY the Released Parties for any Claims for injuries to any minors under their care and control and/or his or her parent/guardian, and for any Claims asserted by, through or under the undersigned, arising from or related to the undersigned’s entry into and participation in the Activities—including, but

not limited to, the types of Claims enumerated in Paragraph 2. As used herein, “INDEMNIFY” means to agree to assume the Released Parties’ liability in a situation, thereby relieving them of responsibility, and/or reimbursing the Released Party for Claims asserted against them. **5.COVID-19:** We need your cooperation to comply with all local and state guidelines and procedures to keep our exhibitors, families and communities safe. **6.PHOTOGRAPH/INTERVIEW RELEASE AND INDEMNITY**

AGREEMENT: The undersigned grants permission to be photographed, videoed or interviewed in connection with the Activities. The undersigned understands that any such photograph, video or interview may be used by the Released Parties or television, film, video, visual, graphic or printed media. The undersigned agrees to RELEASE and INDEMNIFY the Released Parties with respect to any Claims related to the usage of such photographs or interviews by the Released Parties or any media—including, but not limited to, the types of Claims enumerated in Paragraph 2.

7.CONFIDENTIALITY: Participant acknowledges that during his/her participation in the Activities that Participant may have access to, receive or become acquainted with certain non-public and confidential information, including but not limited to various trade secrets, inventions, innovations, processes, information, records, membership lists, donor lists, contracts, and specifications owned or licensed by HDGS and/or used by HDGS in connection with the Activities and the operation of HDGS. All such non-public and confidential information is hereinafter called the “Confidential Information” and shall remain the property of HDGS at all times. Participant will keep HDGS’s Confidential Information confidential from all third parties. Participant shall not disclose any of the aforesaid Confidential Information, directly or indirectly, or use any of it in any manner, either during the term of this Agreement or at any time thereafter, except as required in the course and scope of Participant’s participation in the Activities. Participant acknowledges that the Confidential Information is unique and valuable, and that breach of the obligations of this Agreement regarding such Confidential Information will result in irreparable injury to HDGS for which monetary damages alone would not be an adequate remedy. Therefore, Participant agrees that in the event of a breach or threatened breach of such provisions, HDGS shall be entitled to injunctive or other equitable relief as a remedy for any such breach or anticipated breach without the necessity of posting a bond. Any such relief shall be in addition to and not in lieu of any appropriate relief in the way of monetary damages. All Confidential Information shall be and remain the property of HDGS, and Participant shall return all of such Confidential Information to HDGS upon the earlier of the termination of this Agreement or Participant’s termination as a member/volunteer of HDGS. **8.COMPLETE AND FINAL RELEASE AND**

INDEMNITY AGREEMENT: As further inducement to HDGS to permit the undersigned’s entry into and participation in the Activities, the undersigned represents that they thoroughly and completely understand that this is a complete and final release and indemnity agreement, that they are freely and voluntarily entering into this Agreement, and that no representations, promises or statements made by any of the Released Parties, or any agent, attorney or other representative of any of the Released Parties has influenced the undersigned in causing them to sign this Agreement. **MISCELLANEOUS**

PROVISIONS: The undersigned acknowledges receipt of all rules and guidelines that govern or apply to the Activities, and further acknowledges that they have reviewed and will abide by such rules and guidelines. The undersigned understands that this agreement shall be binding on their heirs, executors, successors and assigns, that the Agreement will be governed by the laws of Texas, and that jurisdiction and venue for resolution of any dispute regarding this Agreement shall lie in State District Courts in Gillespie, Llano, Kendall or Kerr Counties, Texas. If any part of this Agreement is determined to be invalid or unenforceable, it does not affect the validity of the remainder of this Agreement. The undersigned agrees to the terms and conditions above, and acknowledges receipt of this Agreement.

HDGS CERTIFICATION OF ENTRY ACKNOWLEDGEMENT OF REGULATIONS: As a condition of my entry, I hereby certify that I have read and am familiar with the rules and regulations of HDGS, including the rules and regulations contained in the current “Hill District Grandstand Show General Rules”, and that my entry, whether one or more, is owned and has been fed, fitted and exhibited in accordance with the regulations. I agree that should this certification prove false, I can be disqualified from further participation in all activities of HDGS and will forfeit all prizes, premiums, privileges, and rights of an exhibitor, including the privilege of selling my entry or any other entry in the youth auction. Should this certificate prove false after the entry or any other entry has been sold by me in the youth auction, I agree that I shall forfeit that portion of the price bid at the auction for the entry. We, the exhibitor, and parent/guardian, have not administered to any entry entered by exhibitor, and to the best of our knowledge, the entry has not received, any substance not approved by the U.S. Food and Drug Administration (FDA) and/or the U.S. Department of agriculture (USDA) for consumption animals hereby being entered in the show. We further certify that we have read and understood the drug residue avoidance policy as set forth in the regulations in the “Hill District Grandstand Show General Rules”.

Veterinarians/Treatment/Medication: We agree to comply with the following for animals requiring emergency treatment while an animal is at HDGS and hereby release HDGS from any and all damages which might arise out of such treatment or related action: A. If an animal requires emergency treatment while on show grounds, a licensed veterinarian will be allowed to administer any drug, chemical or feed additive. An exhibitor may choose any licensed veterinarian, but the species superintendent must be notified in advance, and he/she must be present during treatment. Animals which are administered treatments with a withdrawal or extended elimination time period will be disqualified from competition. All treatment costs are the responsibility of the exhibitor. B. We also authorize HDGS to obtain samples from any exhibit for drug testing and agree to the following disqualification policy of HDGS.

Disqualification Policy: If an animal tests positive for drugs, chemicals or feed additives as described above or in the drug residue avoidance policy and/or the carcass is condemned at slaughter, HDGS reserves the right to disqualify any animal. If any animal is disqualified HDGS may require the exhibitor to forfeit all auction sale and/or premium money and forfeit all rights and privileges to exhibit at HDGS in the future and may also subject the exhibitor to such other disciplinary actions as authorized in the regulations, specifically including the drug residue avoidance policy. The class placing will not change if an animal is disqualified. An exhibitor of an animal producing a positive sample of a substance not approved for consumptive animals by federal or state law will be reported to the appropriate law enforcement official for possible criminal prosecution. **HDGS IS THE FINAL JUDGE OF COMPLIANCE WITH HDGS REGULATIONS AND POLICIES.**

USE OF LIKENESS CONSENT: I, the undersigned parent or guardian of the exhibitor identified in the application do hereby acknowledge that I am aware of the intent of HDGS to utilize photographs, video and other likenesses of exhibitors in the events of HDGS in the media, including but not limited to magazines, newspapers, television, promotional literature, social media and in HDGS programs. In consideration of the exhibitor being allowed the privilege of participating in the events of HDGS, I do hereby grant to HDGS the right to use any such photograph, video and other likenesses of my child or ward in the media.